

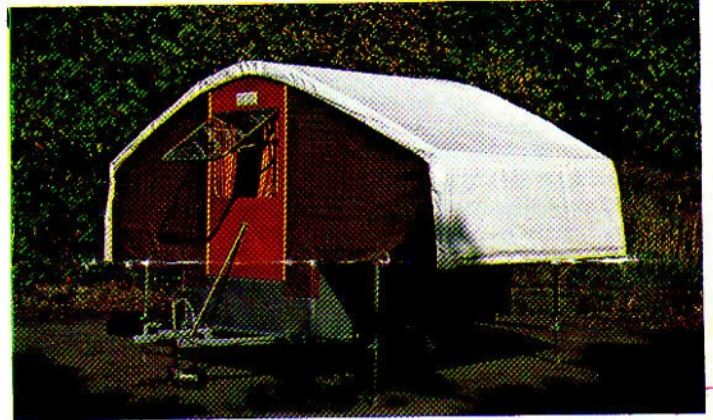


THE EXCLUSIVE DANDY FOLDING CARAVAN OR TRAILER TE

THE BEST OF BOTH WORLDS ELIGIBLE FOR BOTH TENT AND CARAVAN SITES



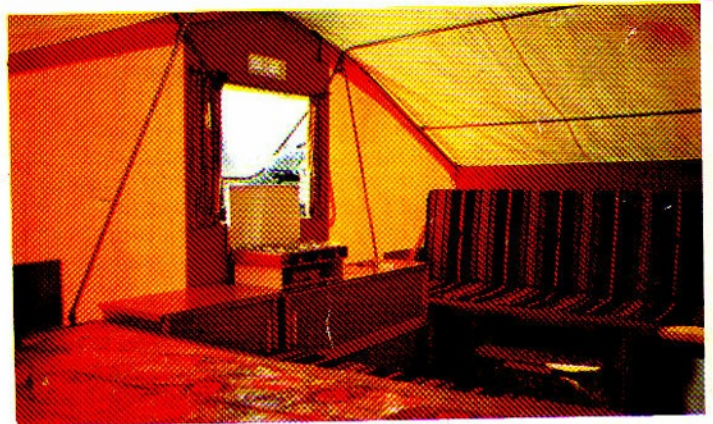
Dandy 12ft. with Annex front opened to show neat fit of groundsheet.



Front of Dandy 4/5 showing large opening window



Dandy 12ft. 4-Berth, folded and erected



Showing interior of Regency 5 Berth



17ft. erected — set level on sloping ground.



Spacious interior of 17ft.

'DANDY' CARAVAN, CHURCH STREET, ORRELL, WIGAN WN5 8TG. TELEPHONE: UP HOLLAND 622759

HOW TO FIND US—

If visiting the works we are in sight of the M6. Please turn off the M6 at junction 26 following the signs for Up Holland and Orrell. When you reach the main road 'T' junction traffic lights, turn left sign post Up Holland, then turn left at the next set of traffic lights and left at the next traffic lights, this is Church Street, Orrell, and the works are on your left. Orrell lies between Wigan and Skelmersdale.

DANDYS ARE OF UNIQUE CONSTRUCTION HONED AND REFINED OVER 16 YEARS OF CONTINUOUS PRODUCTION TO A VERY HIGH STANDARD

The Dandy folding Caravans or Trailer Tents for the 1980's are better value than ever and are fully accepted by the Caravan Club as a folding Caravan and by the Camping Club as a Trailer Tent which is unique. The main features are:— No canvas, guy lines, tent pegs or inner tents used. Covered in nylon fabric impregnated with PVC which is rotproof, waterproof, untearable and will not sustain flame, it is also insect repellent. The nylon is antifungus treated so that when the trailer is folded wet, it can be left wet until the next time of use without any deterioration of the material. Have you considered how you can dry out a canvas trailer at home? Have you the necessary space to put it all up and peg it out to stop the canvas shrinking? The nylon PVC fabric is washable with any normal cleaner, we have not found one that will affect it yet other than abrasives which will scratch the polished surface, you can even remove paint or tar with polystripper or petrol if necessary. It will last indefinitely, we haven't replaced any nylon PVC panels in the 15 years of manufacturing through normal wear and tear. No stretch or shrink problems. The roof is always made in polished white — two layers with $\frac{3}{8}$ " foam insulation, this keeps the inside of the trailer cool during hot weather and retains heat within the trailer in cold weather. These trailers have been successfully used in the Arctic and also in every desert in Africa and most other places in the world.

All models are fitted with lockable door and aluminium framed toughened glass windows. We fit 7" brakes as standard and for smooth braking a hydraulically damped hitch. We do not believe any trailers should be built without them for safety reasons, particularly if you have a small front wheel drive car. Have you thought of going down an Alpine pass for 10 miles or more with a mini weighing 12 cwts. or a Reliant three wheeler weighing 8 cwts. with over a quarter of a ton on the back pushing at you. We have had customers who have had accidents or near accidents towing unbraked trailers, who found out the hard way that brakes are essential. Don't get caught out, enquire about brakes and weight of trailer before you buy.

We use car wheels and tyres to give a more than adequate load and speed capacity. 95 m.p.h. on the 10" wheels and 113 m.p.h. on the 12". Inflation pressure is only 26lbs. giving a soft ride. Most Trailer tents are fitted with 8" tyres, and these are limited to 50 m.p.h. giving you no speed capacity to spare, the load capacity is usually between 1 and 2 cwts. Inflation pressure is usually about 60 lbs. and they must be checked weekly at these high pressures. One could ask why do you see Trailer tents advertised for sale with two spare wheels? Could be the new Dandy customer who on his previous Trailer tent used 6 tyres to get to Sweden and back.

When you are erecting a Dandy, you turn the light weight aluminium framed beds over and the roof erects automatically, you can see the method of erection on the back page, this is a Dandy 4 berth but the same erection principles apply to all models. Putting the trailer up or down is done under cover and when folded up the roof is on the underside of the top bed and any water on the roof is kept away from the interior of the trailer.

EXTRACTS FROM A 'DANDY' TEST by Motor Caravan and Camping

The 'Dandy' towed level and firm as a rock, causing no loss of view in the rear mirror. The excellent towing characteristics are due in no small part to the sturdy axle with rod operated brakes and independent suspension.

We erected and dismantled the trailer several times during a holiday in Scotland. First time took 15 minutes each way, we got it down to a little more than five, and no doubt that could be improved upon with practice. We did like its suitability for camping ground which was rough or smooth level or sloping. The simple rugged corner jacks are first-class and give absolute rigid support to the hinged bunks.

The waterproof end pieces and the roof itself are all held tightly in position by elastic tensioners which clip over the hooks. Simple, but more effective than press studs and tension on the material is always correct. The reinforced plastic roof and the end pieces were absolutely waterproof.

We thought of the 'Dandy' at first as a tent trailer. Now we're inclined to agree with its designer that it is more like a folding caravan, with its opening window, lockable door, independence of the nature of the ground and, best of all, complete absence of pegs.

'Dandy' was certainly the quickest to erect and dismantle that we have tried so far. Construction of chassis, body and tenting is first class and the 'Dandy' is extremely good value for money and should last a lifetime.

The vast majority of Trailer tents go up and down under cover and then drop all the wet canvas inside the trailer with your bedding and clothing and thoroughly soak them all while you are travelling.

The normal time taken from unhooking the trailer from the car to being fully ready for use is less than 5 mins. without rushing. (About 15 mins. quicker than trailers with an advertised 15 second erection time. The structure of the Caravan being all off the ground, you can set it level on a sloping or uneven site, and if you don't like the pitch you are on, you can lift the four corner legs and tow it fully erected anywhere else on the Camp/Caravan site.

Towing the Dandy 4 berth with a standard Hillman Imp saloon of 875c.c. on the motorway and maintaining 50 m.p.h. we obtained the fuel consumption figure of 47.5 m.p.g. Tried for maximum speed the Imp could reach 74 m.p.h. with the Dandy on tow. Some figures obtained on a test done by 'Caravan' magazine. A Mazda 1300 c.c. and an Opel 1200c.c., towing an 11ft. caravan at a steady 50 m.p.h. gave only 18 m.p.g. Neither model could exceed 50 m.p.h.

The Dandy is now in its 16th year and has been an unqualified success with sales throughout the world, our very first model is still going strong with all the original materials, and when fitted with an annex 3 years ago the colour of the trailer still matched the new annex, and it looks good for another 15 years. Our local Trailer tent section of the Camping Club at the last count had 56 Trailer Tents and 32 of them were Dandy's, there are approximately 45 types available. IF YOU ARE INTERESTED IN A FOLDING CARAVAN OR TRAILER TENT YOU CANNOT AFFORD TO IGNORE THE 'DANDY'. YOU CAN PAY MORE FOR OTHER MAKES AND NOT GET AS GOOD A SPECIFICATION. We do very little advertising, as most of our sales come from recommendations by very satisfied customers. We have as many as six Dandy's in one road on a housing estate.

We fear no competition and are looking for sensible people who look at everything before making up their minds when you do this the 'Dandy' must be at the top of your list. It is worth the journey to the works to see the 'Dandy' as it could save you a lot of money and possible disappointment by buying something else locally.

The Dandy is a very substantial go anywhere vehicle, just as suitable for an overland trip to Australia as a weekend by the sea-side. It rides like a sports car.

The Dandy has all the comforts of a normal caravan but without the clumsiness of storing and towing without the penalty of high petrol consumption. It is approximately £1000 cheaper than the cheapest imported Folding Caravan and can easily be towed by the smallest of cars.

The Dandy has the lowest depreciation of any Folding Caravan/Trailer Tent and is built to give a lifetime of pleasure for less than a fortnights holiday for four in an hotel. A 10 year old Dandy is worth more than it cost new, compare this with the average life of a normal caravan which is about 10 years.

SPECIFICATION OF

DANDY 4 12ft. 4 ADULT BERTHS

One double bed 6ft.4ins. x 4ft. x 3½ins. thick mattress covered in good quality cotton material. Second double bed 6ft.4ins. x 3ft.10ins. converts to settee and is upholstered in good quality moquette. Both bed frames made from lightweight aluminium extrusions and fitted with headboards and sideboards. Bedding locker with full length moquette covered seat cushion. Carpeted with 'Flotex' easy clean vinyl carpet. Stainless steel sink unit with drainer and stainless steel work top and folding table. Ventilators front and rear fitted with mosquito netting. Opening safety glass window at the front and a fixed glass window in the door, both windows are curtained. The door is fitted with a locking handle complete with two keys. The front and rear sections are in 18mm. Birch plywood with special Phenolic film facings. (Never needs to be varnished). Fully insulated double roof. (No inner tent necessary). The chassis is of a tubular steel space frame. Sides clad with 'Doeflex' solid plastic sheets. Full international standard lighting with 7 pin plug. Trailer fitted with reinforced cover for standing outdoors in all weather. The wheels can be recessed to special order as on the 5 berth at an extra cost of £34.50 to give a total width of 4ft. 2ins. Colour choice Brown or Orange for the walls. All roofs are in white. Compare this specification with any other trailer tent.

SPECIFICATION OF

DANDY 4/5 13ft. 4 ADULT BERTH AND 1 CHILD

As above but 5" wider bedding locker and seat cushion making child's berth and 5" wider floor space giving an extra interior width of 10" and increased storage volume of 8 cu. ft. Including cool box with carrying handle. The wheels can be recessed to special order underneath as on 5 berth at an extra cost of £34.50 and give a total width of 5ft. 1ins.

SPECIFICATION OF

DANDY 5 14ft. 5 ADULT BERTHS

As Dandy 4 plus additional 13 cu.ft. of internal storage. Bedding locker 24" wide making extra berth 60" x 23" or 76" x 23" by removing the additional cupboard which is 15" deep x 12" high and 24" wide.

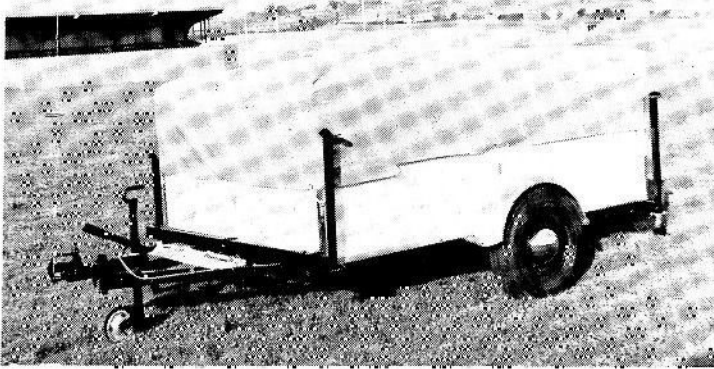
SPECIFICATION OF

DANDY 6 17ft. 6 ADULT BERTHS

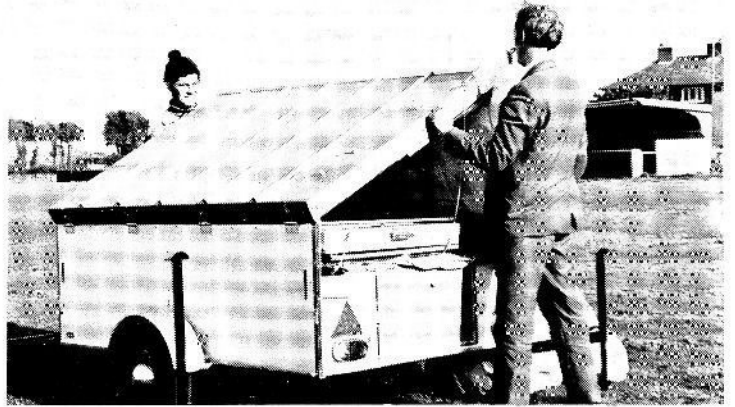
3 Double beds 6ft.1ins. x 4ft. — 1 mattress covered in good quality cotton material. 1 divided into two and upholstered in good quality moquette and converting into a settee. The third double bed covered in good quality moquette utilises the table and two 4ft. settees — normal caravan style. With all three beds made up the kitchen and floor area of 6ft. 1ins. x 5ft. is still useable, including a cool box. Stainless steel sink and drainer and stainless steel work top. Living area covered with 'Flotex' easy clean vinyl carpet. Interior panelling. Oak finish plywood. Large area of safety glass windows, four in all, which are curtained. Lockable door with two keys supplied. Four ventilators fitted with Mosquito netting. Substantial tubular space frame chassis clad with 'Doeflex' solid plastic. The two end bed frames made of aluminium extrusion for light weight in handling and hinged directly to the chassis. The two folding side sections containing windows and door are steel framed clad internally Oak finish plywood and externally with nylon PVC fabric. JOCKEY WHEEL AND HITCH LOCK WITH TWO KEYS included.

**All trailers fully insulated roof in white, with orange or brown sides.
COMPARE THE SPECIFICATION OF THE DANDYS**

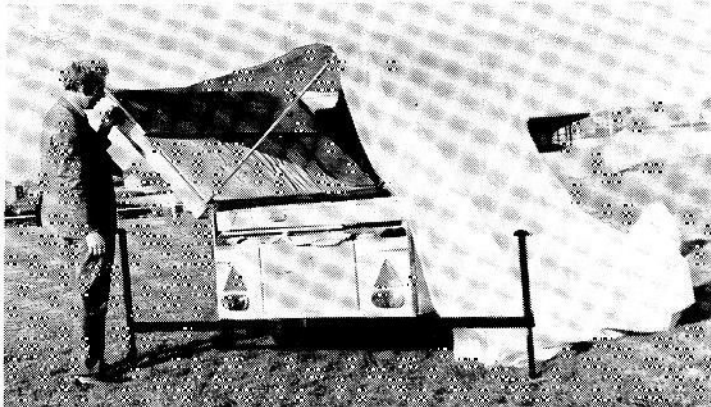
TRAILERS	4 BERTH	4/5 BERTH	5 BERTH	6 BERTH
LENGTH	6' 6"	6' 6"	6' 6"	9'
WIDTH	4'	4' 10"	5' 10"	6' 3"
HEIGHT	3' 4"	3' 4"	3' 4"	3' 4"
LENGTH INCLUDING DRAW BAR	9' 6"	9' 6"	9' 6"	11' 6"
OVERALL WIDTH INCLUDING WHEELS	5' 1"	5' 11"	6'	6' 3"
OPEN WIDTH	12'	13'	14'	6' 3"
OPEN LENGTH	6' 6"	6' 6"	6' 6"	17'
UNLAID WEIGHT	5 CWTS.	5½ CWTS.	6 CWTS.	8 CWTS.
LUGGAGE CAPACITY	5 CWTS.	4½ CWTS.	4 CWTS.	7 CWTS.
NOSE WEIGHT — MINIMUM	25 LBS.	25 LBS.	25 LBS.	25 LBS.
HEAD ROOM	6' 2"	6' 2"	6' 2"	6' 2"
STORAGE CAPACITY OF CUPBOARDS	15 CUB. FT.	18½ CUB. FT.	22 CUB. FT.	24 CUB. FT.
STORAGE CAPACITY INCLUDING FLOOR AREA WHEN CLOSED	25 CUB. FT.	33 CUB. FT.	38 CUB. FT.	45 CUB. FT.
TABLE SIZE	30" x 24"	30" x 24"	30" x 24"	48" x 26"
BEDDING LOCKER	6' x 13" x 12"	6' x 18" x 12"	6' x 24" x 12"	4' x 24" x 12"
				(12)
WHEEL SIZES	10"	10"	10"	12"
TYRE SIZES	520/10	520/10	520/10	145 SR 12
TOUGHENED GLASS FIXED WINDOW IN DOOR	18" x 24"	18" x 24"	18" x 24"	18" x 24"
TOUGHENED GLASS OPENING WINDOW	30" x 24"	30" x 24"	30" x 24"	36" x 27" (3)
HEIGHT OF BALL	13½"	13½"	13½"	15½"
SIZE OF BALL TO BE FITTED TO TOW BAR	50MM	50MM	50MM	50MM
BRAKES	7" DRUM — ROD OPERATED			
SUSPENSION	INDISPENSION RUBBER TORSION			
HITCH	ALCO HYDRAULICALLY DAMPERED			
PARKING BRAKE	ALCO HAND BRAKE			
ANNEX				
LENGTH	6' 2"	6' 2"	6' 2"	6' 2"
WIDTH	12'	13'	14'	14'
WINDOWS IN SIDE WALLS	36" x 25"(2)	36" x 25"(2)	36" x 25"(2)	36" x 25"(2)
WINDOWS IN FRONT WALL	50" x 36"	50" x 36"	50" x 36"	50" x 36"



(1) Set Dandy level. Pull out jackets (self adjusting). Remove cover



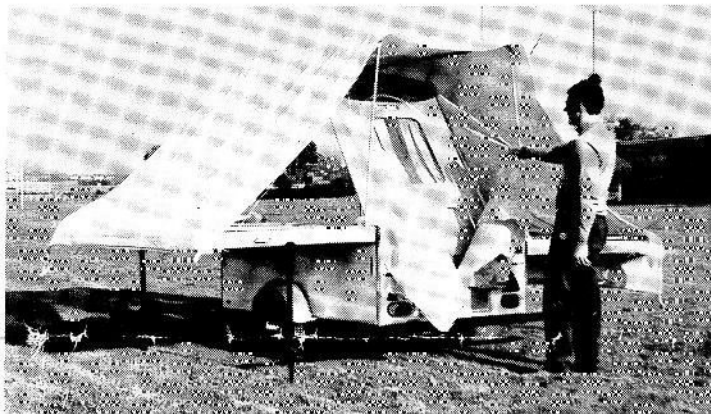
(2) Drop roof to ground on offside. Open first bed



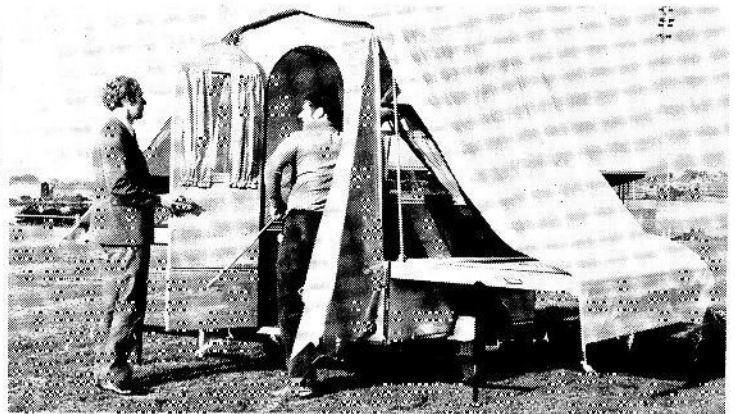
(3) Note the roof, self erecting and always covering the trailer



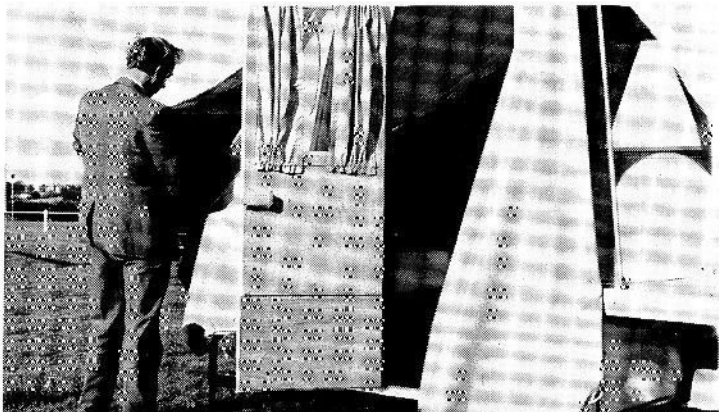
(4) Open second bed (note mattresses still in position undisturbed)



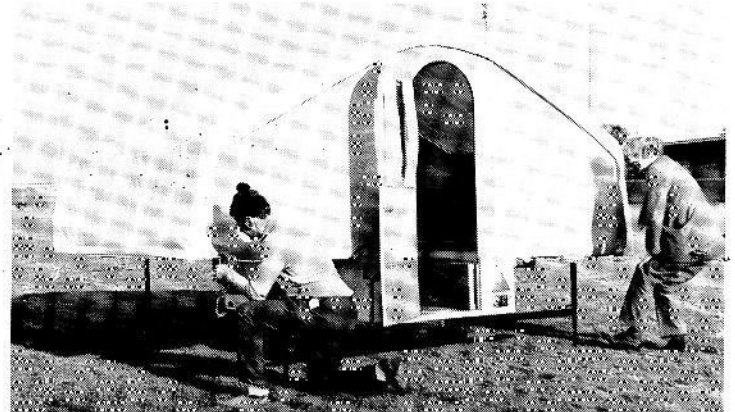
(5) Pull up door section and open door. This automatically locks upright



(6) Push up front section with roof pole and fix in socket



(7) Lift up side boards and hook in side panels



(8) Fasten elastics and roof ropes

For more things like this, please visit the Dandy Forum
www.dandyforum.co.uk