

THE BETTER WAY TO GET AWAY

This season marks Conway's 25th anniversary, and the advent of the first Conway trailer tent. Since that day thousands of proud Conway owners have been enjoying the freedom, flexibility and fun that comes free with every Conway.



Freedom of being able to come and go as you please, whether you are staying at a site close to home or exploring the far-flung shores of the Mediterranean.

Flexibility in being free to change your mind if you wish to move on and pitch in pastures new. Or simply to get away for weekend breaks, or even a week in the spring as well as the fortnight in high summer.

Then there's the best bit, the fun of going camping. Maybe its the feeling of being closer to nature, and enjoying the healthy outdoor life with all that fresh air. Or the camaraderie and friendship that seems to develop amongst campers. Or just being away from all the hurly-burly of routine and not being bound by the clock for mealtimes, or anytimes for that matter.

Conway know all about the pleasures of camping and it shows in our products. New and innovative designs incorporate all the little things that make good camping even better. And to ensure the pleasure and enjoyment goes on year after year every Conway is built with quality and durability in mind.

Better canvas, better fittings, better accessories and better designs. Just ask any Conway owner and they'll tell you. There's no better way to get away!

Contents

| | |
|--------------------|----|
| <i>Clipper</i> | 3 |
| <i>Ascot</i> | 4 |
| <i>Cambridge</i> | 6 |
| <i>Canterbury</i> | 8 |
| <i>Oxford</i> | 10 |
| <i>Challenger</i> | 12 |
| <i>Cruiser</i> | 14 |
| <i>Cardinal</i> | 16 |
| <i>Accessories</i> | 18 |



CLIPPER



1

For those of you who were thinking of buying a large frame tent, then having to buy a luggage trailer to carry it, you need look no further.

Manufactured from the same high quality materials that have made Conway the first choice of campers, the new "Clipper" is our latest four berth trailer tent. Giving you the size and space you require, with off-the-ground sleeping areas at a price that will suit anyone's pocket.

Folding wet canvas is no problem either, as the erecting system is the same tried and tested system to those of Clipper's stable mates. The canvas is manufactured by Walker of Holland using high quality materials and stitching, and is tastefully finished in co-ordinated Greys with Rose trim and matching curtains.



2

FEATURES

- Fully Weatherproof Canvas
- Large Double Mattresses
- Zip Fronted and Vented Inner Tents
- Roll-up Front with Stable Door
- Ventilated Kitchen and Cabin Windows
- Underbed storage facility
- Storage Lockers
- Integral Awning
- Matching Curtains
- Roof Lining
- Carpet to Cabin area
- PVC coated Galvanised Steel Body
- Full Combination Road Lights

- Standard 50mm Hitch Coupling
- Independent Rubber Torsion Suspension
- 400 x 8" 4 ply Tyres
- Galvanised Chassis

OPTIONS

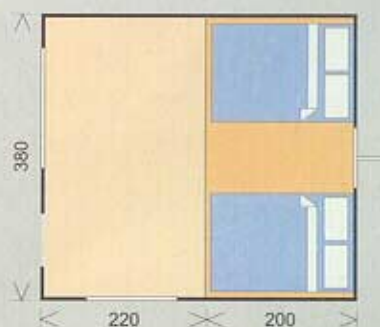
- Sun Canopy
- Wheeled Side Storage Brackets for compact easy storage
- Ground Sheet for a cosy, comfortable Awning
- Spare Wheel and Bracket

SPECIFICATIONS

| | |
|-----------------|-------|
| OVERALL LENGTH | 284CM |
| BODY LENGTH | 204CM |
| BODY WIDTH | 125CM |
| TRAILER HEIGHT | 110CM |
| EX WORKS WEIGHT | 200KG |
| CARRY CAPACITY | 150KG |
| GROSS WEIGHT | 350KG |

1 Clipper with the awning front panel rolled up and the optional sun canopy attached.

2 Clipper fully erected without sun canopy showing main door rolled back.



ASCOT



Ascot is available in two models, the Ascot DL including kitchen, and the Ascot L without kitchen. Both models are finished in attractive Emerald Green and Grey canvas with matching trim and curtains for the fashion conscious young family.

Whichever model you choose you will find an array of features, each one designed to make your holiday as enjoyable as it can possibly be. The Ascot DL is ideal for long distance touring where frequent rest stops are required, easy access to the kitchen unit will soon have you refreshed and on your way. Once on site both the DL and L models will provide you with all the comforts of home, offering a level of camping luxury no other manufacturer can match.





Ascot comes complete with its own integral awning with ventilated kitchen window.

Panoramic front and side curtained windows provide splendid visibility and give the Ascot a light and airy feel, whilst the versatile front wall allows one or both doors to be opened. Or, the whole front can be rolled up out of the way.

The roof lining is pelmetted in matching Emerald Green and Red.

The fully enclosed, zipped inner bedrooms are ventilated and have a generous bed size of 200cm x 142cm utilising the locker cushions which are finished in a co-ordinated fabric.

Ample storage space is provided in lockers beneath the seat cushions whilst easy clean vinyl floor covering completes the attractive and practical cabin area.



FEATURES

- 220cm x 420cm Integral Awning
- Zipped Two-Way Ventilated Inner Tents
- Storage Lockers
- Panoramic Windows
- Curtains
- Vinyl Floor Covering
- Roof Lining
- Large Double Beds
- Kitchen Unit *
- Ventilated Kitchen Window
- Dual Entrance Doors
- Roll-up Front Wall
- Radial Tyres
- Transit Cover
- Fully Galvanized Chassis

OPTIONS

- Sun Canopy
- Fridge Storage Box
- Trailer Brakes
- Jockey Wheel
- Spare Wheel
- Table
- Backrest
- Wind-Down Corner Steadies

*DL model only.

SPECIFICATIONS

| | DL | L |
|-----------------|-------|-------|
| OVERALL LENGTH | 369CM | 324CM |
| BODY LENGTH | 260CM | 215CM |
| BODY WIDTH | 125CM | 125CM |
| TRAILER HEIGHT | 105CM | 105CM |
| EX WORKS WEIGHT | 295KG | 250KG |
| CARRY CAPACITY | 130KG | 150KG |
| GROSS WEIGHT | 425KG | 400KG |

- 1 The Ascot is shown with one door open and one door in the stable door position.
- 2 The versatility of the front wall completely rolled up, comes into its own when the optional sun canopy is added.
- 3 Ascot showing both doors fully open.
- 4 When you need to be zipped up, cosy and warm and protected from the elements, you'll appreciate the quality and the attention to detail that goes into every Conway, and a neater unit would be hard to find.



CAMBRIDGE



Cambridge is the ideal trailer tent for family camping. Tastefully finished in Lincoln Green and Grey livery, with matching zips and Haricot patterned curtains, Cambridge is available with or without kitchen depending on your preference.

Cambridge incorporates many of the tried and tested features developed by Conway over years of quality manufacturing. Like all Conways it is easily erected, easily towed and easy to live with. Whether it's a weekend break for two or the annual family holiday, the Cambridge will accommodate all your needs beautifully.





A 300cm x 420cm wide zip-on awning complete with ventilated kitchen window and full side roll-up facility comes as standard with the Cambridge. As does the separate roof lining with integral toilet or wardrobe compartment and handy storage pockets.

The full zip-out front panel offers two doors, half and half doors or, the whole section can be removed.

Both fully enclosed and zipped inner bedrooms are ventilated, giving a bed size of 200cm x 142cm, utilising the colour co-ordinated locker cushions.

All in all, Cambridge epitomises Conway's reputation for quality and style, and is sure to be a winner amongst dedicated campers.



FEATURES

- Zipped Two-Way Ventilated Inner Tents
- Storage Lockers
- Panoramic Windows
- Curtains
- Vinyl Floor Covering
- Roof Lining
- Kitchen Unit *
- Ventilated Kitchen Window
- Dual Entrance Doors
- Roll-up Side Wall
- Radial Tyres
- Transit Cover
- Fully Galvanised Chassis
- Locker Cushions
- Zipped Awning
- Zip-Out Front Wall

- Toilet/Wardrobe Compartment with Storage Pockets

OPTIONS

- Sun Canopy
- Fridge Storage Box
- Trailer Brakes
- Jockey Wheel
- Spare Wheel
- Table
- Backrest
- Wind-Down Corner Steadies

*DL model only.

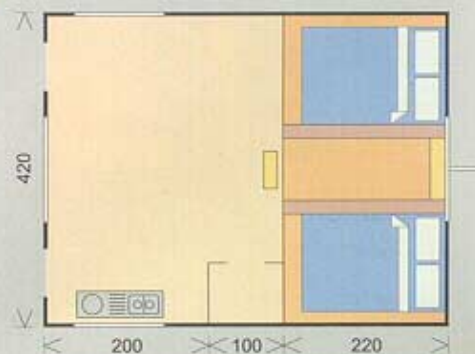
SPECIFICATIONS

| | DL | L |
|-----------------|-------|-------|
| OVERALL LENGTH | 369CM | 324CM |
| BODY LENGTH | 260CM | 215CM |
| BODY WIDTH | 125CM | 125CM |
| TRAILER HEIGHT | 105CM | 105CM |
| EX WORKS WEIGHT | 300KG | 255KG |
| CARRY CAPACITY | 125KG | 145KG |
| GROSS WEIGHT | 425KG | 400KG |

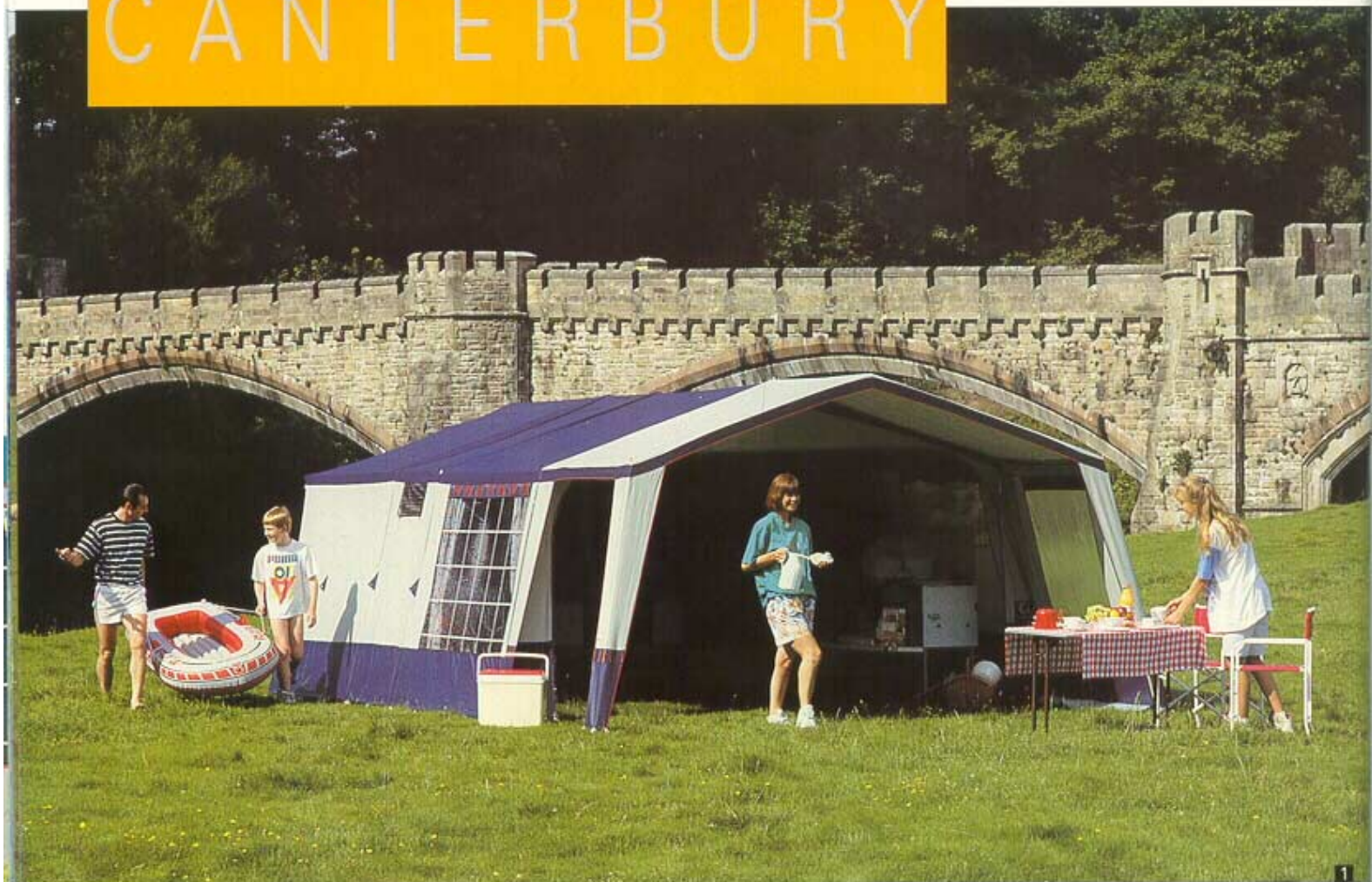
1 The optional sun canopy can either be fitted to the awning, (shown here) with the zip-out front panel removed. Or it can be attached to the cabin canvas for that overnight stop.

2 The versatility of the removable front wall is demonstrated here showing one half rolled back.

3/4 The blue and green striping across the front wall and the colour co-ordinated zips, edging and tapes blend perfectly with Lincoln green and grey canvas. As seen in both of these pictures with both doors fully open and fully closed.



CANTERBURY



When you look at the Canterbury, it's easy to see why people who are serious about their camping choose Conway.

In its classic Royal Blue and Grey livery, with Red, Blue and Gold striping, it looks every bit as beautiful, as it does practical and spacious.

Designed to meet every camping need on Conway's unique triple-use principle, Canterbury is quickly erected for an overnight stop or as a weekender, but fully erected it becomes a luxurious holiday home from home. Fit the optional sun canopy, side walls and fridge box and you have a complete unit for the most discerning camper.





3

The 320cm awning, complete with roof lining, toilet and wardrobe compartments is split by zips in 1 metre and 2.20 metre sections. The awning can be zipped to the cabin for week end use. It includes a panoramic side window and zip-out front panel. The optional sun canopy is also zipped and can be attached to the awning or the cabin.



4

Optional side walls for the sun canopy are also available. Both double inner bed tents are zipped and fully ventilated, and have a generous bed size of 200cm x 142cm when used with the matching locker cushions.

As with every Conway there is ample storage space and an attractive easy-clean vinyl floor covering to complement the cabin interior.

Canterbury's luxurious specification includes, spare wheel and jockey wheel as standard.



FEATURES

- Split Section Zipped Awning
- Zip-Out Front Wall
- Storage Lockers
- Zipped Two-Way Ventilated Inner Tents
- Curtains
- Vinyl Floor Covering
- Roof Lining
- Large Double Beds
- Kitchen Unit
- Ventilated Kitchen Window
- Dual Entrance Doors
- Roll-up Side Wall
- Radial Tyres
- Transit Cover
- Ventilated Toilet Compartment with Storage Pockets

- Panoramic Windows
- Fully Galvanised Chassis
- Wardrobe Compartment with Storage Pockets
- Spare Wheel
- Jockey Wheel

OPTIONS

- Sun Canopy
- Fridge Storage Box
- Trailer Brakes
- Backrest
- Table
- Wind-Down corner steadies

SPECIFICATIONS

| | |
|-----------------|-------|
| OVERALL LENGTH | 369CM |
| BODY LENGTH | 260CM |
| BODY WIDTH | 125CM |
| TRAILER HEIGHT | 105CM |
| EX WORKS WEIGHT | 325KG |
| CARRY CAPACITY | 100KG |
| GROSS WEIGHT | 425KG |

1 Canterbury in all it's glory, featuring zip-out front awning panel, optional sun canopy and side wall.

2 The optional sun canopy can be fitted to the awning, or zipped to the front of the main cabin as an overnighter.

3 Canterbury's livery really takes effect when the unit is all zipped up.

4 The zip-out front panel has been rolled back halfway to create a larger entrance. Note the panoramic side window.



OXFORD



Oxford is completely new, and is Conway's finest and largest trailer tent to date. Based upon the same tried and tested principles that have earned Conway their enviable reputation for quality and innovation, it has a floor area of almost thirty square metres when erected.

More comfortable and more spacious, Oxford can easily accommodate up to eight people using the optional under bed tents, and is the ideal base camp for those who wish to relax on holiday. Tastefully finished in three shades of Blue, the canvas is from Cabanon of France.

Oxford also has a new larger trailer which provides exceptionally large double beds and roomy cabin area. It has a fully galvanised chassis, and comes complete with spare wheel, jockey wheel, auto reverse brakes and wind-down corner steadies as standard.





3

The 1.8 metre integral annex houses the services including kitchen, toilet and wardrobe compartments, and has a zip out front panel which can be zipped into the front 2.2 metre awning, offering full panoramic windows and side door.

Both annex and awning have separate, pelmetted roof linings.

The extra large double inner bed tents are fully ventilated, and have a generous bed size of 200cm x 150cm.

The cabin area is also more spacious and provides ample storage in the 1.5 metre trailer body.



4



FEATURES

- Fully Zipped Awning
- Zipped Two-Way Ventilated Inner Tents
- Storage Lockers
- Panoramic Windows
- Curtains
- Vinyl Floor Covering
- Roof Linings
- Kitchen Compartment with Ventilated Window
- Kitchen Unit
- Ventilated Toilet Compartment with Storage Pockets
- Zip-Out Front Wall
- Radial Tyres
- Extra Large Double Beds
- Transit Cover
- Spare Wheel

- Jockey Wheel
- Wardrobe Compartment with Storage Pockets
- Wind-Down Corner Steadies
- Auto Reverse Breaks
- Fully Galvanised Chassis
- Wheel Trims

OPTIONS

- Fridge Storage Box
- Underbed/Storage Tents

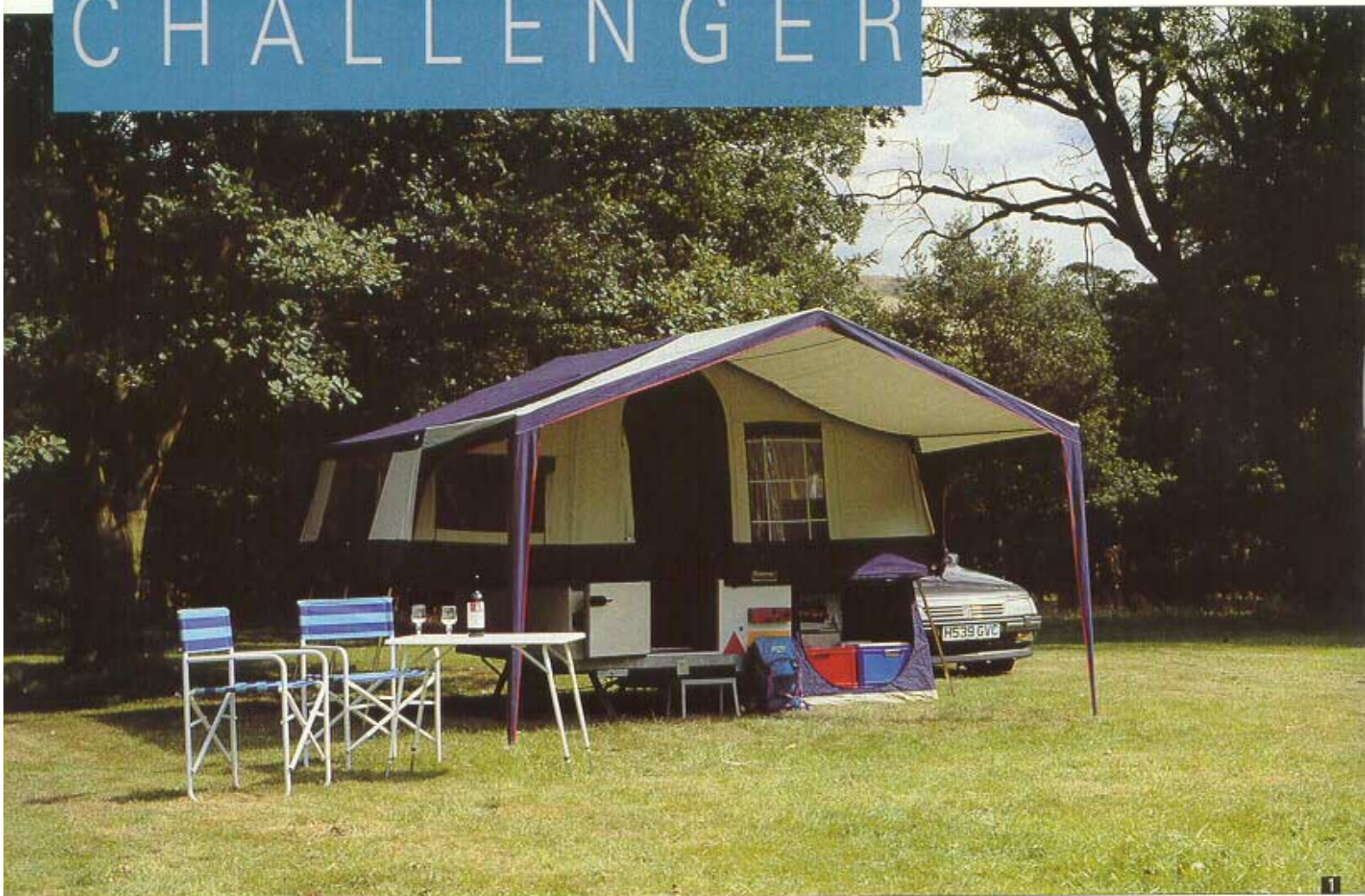
SPECIFICATIONS

| | |
|-----------------|-------|
| OVERALL LENGTH | 389CM |
| BODY LENGTH | 253CM |
| BODY WIDTH | 153CM |
| TRAILER HEIGHT | 115CM |
| EX WORKS WEIGHT | 395KG |
| CARRY CAPACITY | 205KG |
| GROSS WEIGHT | 600KG |

- 1 Oxford fully erected with side door and ventilation panels open.
- 2 Zip-out front panel completely removed providing a spacious canopied area.
- 3 Front panel zipped in centre position separating service area and front awning.
- 4 Weekend unit without awning still offering spacious living and service areas.



CHALLENGER



A fast erecting system makes the Challenger a must for touring without the need for pegging. The unit can be easily towed by a small car, and can be stowed on its side by using the optional wheeled Side-Storage brackets.

The attractive Royal Blue and Grey canvas comes complete with two inner tents, roof lining and double mattresses. One of the mattresses converts easily into a bench seat. Interior fittings include carpet, lockers, cupboard units, kitchen unit with electric water pump. Top quality upholstery and furniture with American Cherry panelling, profiled doors and drawer fronts, provides a level of camping luxury normally reserved for the larger models.



2



The ideal 2-4 berth unit for that overnight stop or simply zip on the awning for that longer holiday.

Fitted as standard to the fully galvanised chassis is a fridge storage box to house any top opening fridge, or it can be used for gas bottle storage.

Optional accessories designed to enhance this versatile unit are: under bed tent, zip-on awning and sun canopy.



FEATURES

- Low Towing Height
- Wheels Under for Safe Towing
- 5ft Wide Trailer
- Easy side storage
- Galvanised Full Perimeter Chassis
- Auto Reverse Brakes
- Wind-Down Corner Steadies
- Underslung Spare Wheel
- Twin Walled PVC coated Galvanised Steel Body
- Gas Bottle/Fridge Box
- Kitchen Unit permanently connected
- Bench Seating, Table, Storage Units
- Waterproof Mattress Protection

- Fully Enclosed Inner Tents
- 300 gm Classic 100% Cotton Canvas
- Quick Erecting System
- Non Pegging
- Wheel Trims

SPECIFICATIONS

TRAILER FOLDED

| | |
|----------------|-------|
| OVERALL LENGTH | 332CM |
| BODY LENGTH | 216CM |
| BODY WIDTH | 152CM |
| TRAILER HEIGHT | 112CM |

TRAILER ERECTED

| | |
|-----------------------|-------|
| CAMPSITE LENGTH | 386CM |
| CAMPSITE WIDTH | 210CM |
| INTERIOR HEIGHT | 190CM |
| OPTIONAL AWNING WIDTH | 420CM |
| OPTIONAL AWNING DEPTH | 220CM |

TRAILER WEIGHTS

| | |
|----------------|-------|
| EX WORKS | 360KG |
| CARRY CAPACITY | 240KG |
| MAXIMUM GROSS | 600KG |
| HITCH WEIGHT | 28KG |

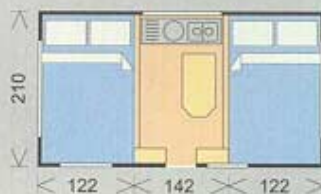
1 Optional zip-on sun canopy and underbed storage tent.

2 Cabin interior showing one of the mattresses converted into the bench seat.

3 Challenger can be erected in minutes when you need to stop for a break.

4 Optional awning with double entrance doors and panoramic windows.

5 Easy storage on wheeled side storage brackets.



CRUISER



This luxurious six berth folding camper incorporates many of the features of the Cardinal - full perimeter galvanised steel chassis, body finished in Oyster, neat Green coachlines and matching Green transit cover.

The easily erected non-pegging Cruiser has slide out double beds, which automatically lift the cabin frame. The stylish Lincoln Green and Grey canvas, trimmed with Red, houses many features normally reserved for caravans. The new hinge-over/ lift-up kitchen unit has been designed for optimum working height and increased storage capacity. Or, if you need further on-site storage there's the optional *high-level shelf*.





The spacious accommodation has fitted as standard, a full kitchen unit with dinette, spacious storage lockers, cupboards and wardrobe panelled in elegant American Cherry, a 3-way fridge, inner tents and ample ventilation. Top quality mattresses and chenille upholstery in matching colours ensure luxury camping with this model.

The Cruiser can be extended with the optional zip on awning or sun canopy, and extra storage with the under bed storage tent.



FEATURES

- Automatic Non Pegging Erecting System
- Slide-Out Beds
- Low Towing Height
- Galvanised Full Perimeter Chassis
- Auto Reverse Braking System
- Wind-Down Corner Steadies
- Underslung Spare Wheel
- Twin Wall Insulated Body
- Gas Bottle Storage Box
- Wardrobe, Kitchen Unit, Dinette Seating
- Table, Ample Storage Space
- Electric Water Pump
- 3-way Operational Refrigerator

- Sleeps 6
- Fully Enclosed Inner Tents and Roof Liner
- Internally Opened Window Ventilation
- 300 gm Classic 100% Cotton Canvas

SPECIFICATIONS

TRAILER FOLDED

| | |
|----------------|-------|
| OVERALL LENGTH | 410CM |
| BODY LENGTH | 275CM |
| BODY WIDTH | 202CM |
| TRAILER HEIGHT | 122CM |

TRAILER ERECTED

| | |
|-----------------------|-------|
| CAMPSITE LENGTH | 488CM |
| CAMPSITE WIDTH | 202CM |
| INTERIOR HEIGHT | 198CM |
| OPTIONAL AWNING WIDTH | 550CM |
| OPTIONAL AWNING DEPTH | 200CM |

TRAILER WEIGHTS

| | |
|----------------|-------|
| EX WORKS | 480KG |
| CARRY CAPACITY | 270KG |
| MAXIMUM GROSS | 750KG |
| HITCH WEIGHT | 38KG |

1 Optional sun canopy and underbed storage tent.

2 The spacious Cruiser interior featuring American Cherry furniture.

3 Cruiser fully erected without awning or sun canopy.

4 Optional awning showing ventilated window and zip-out front panel.

5 Gas bottle storage box.



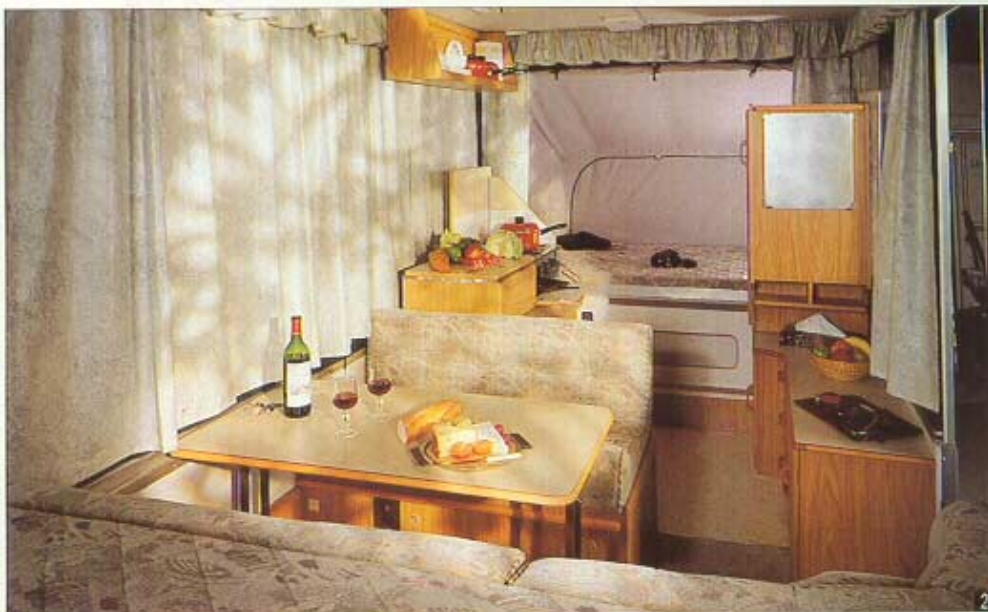
CARDINAL



This luxurious camper is available in two models, the Cardinal and the top of the range Cardinal Clubman. Both offer easily erected, comfortable and stylish accommodation for up to six people.

Cardinal is extremely easy to tow, and the aerodynamic body makes it economical. As well as providing a clearer view of the road behind. Yet fully erected, which takes only a few minutes, it is large enough to provide the whole family with all the luxury of an 18ft caravan.

The new kitchen unit has been designed for optimum working height and all furniture is tastefully finished in American Cherry with profiled doors and drawer fronts. Further storage is provided with the *high-level shelf*.



2



Standard fittings in both models include spacious full width seating dinette, large comfortable mattresses covered with an attractive hardwearing chenille upholstery fabric and complimentary pelmet and curtains.

The furniture is styled in American Cherry with profiled drawers and doors, heat resistant work tops and table, large wardrobe, ample underseat storage and generous cupboard space.

In addition, the Cardinal Clubman features as standard a 3-way operational fridge, mains and 12 volt electrics and a Security Box.



FEATURES

- Low Profile Aerodynamic Body
- Unique Wind-up Erecting System
- Lockable Insulated Hard Top
- Galvanised Full Perimeter Chassis
- Auto Reverse Braking System
- Underslung Spare Wheel
- Twin Wall Rigid Body Construction
- Integral Gas Bottle/Storage Compartment
- Easy Slide-out Beds
- Hinge Down Rigid Exterior Door
- Wardrobe, Kitchen Unit, Table, Dinette Seating

- Wind-Down Corner Steadies
- Ample Storage
- Electric Water Pump
- Mains Electrics
- Security Safe
- Fluorescent Lights
- 3-way Operational Refrigerator
- 300 gm Classic 100% Cotton Canvas
- Attractive Hard Wearing Chenille Upholstery
- Fully Enclosed Inner Tents

SPECIFICATIONS

| TRAILER FOLDED | CARDINAL CLUBMAN | CARDINAL CLUBMAN |
|-----------------------|------------------|------------------|
| OVERALL LENGTH | 470CM | 470CM |
| BODY LENGTH | 375CM | 375CM |
| BODY WIDTH | 210CM | 210CM |
| TRAILER HEIGHT | 125CM | 125CM |
| TRAILER ERECTED | | |
| CAMPSITE LENGTH | 550CM | 550CM |
| CAMPSITE WIDTH | 210CM | 210CM |
| INTERIOR HEIGHT | 198CM | 198CM |
| OPTIONAL AWNING WIDTH | 370CM | 370CM |
| OPTIONAL AWNING DEPTH | 220CM | 220CM |
| TRAILER WEIGHTS | | |
| EX WORKS | 660kg | 600kg |
| CARRY CAPACITY | 190kg | 250kg |
| MAXIMUM GROSS | 850kg | 850kg |
| HITCH WEIGHT | 41kg | 47kg |

- 1 Optional sun canopy and underbed storage tent.
- 2 Cardinal's sumptuous interior embodies all the little luxuries that make it a real home from home.
- 3 Cardinal Clubman fully erected without awning or sun canopy for a quick stop en-route.
- 4 Cardinal Clubman with optional awning and toilet extension.
- 5 Cardinal's wind up roof mechanism allows the unit to be erected in minutes.



| TRAILER TENT ACCESSORIES/FEATURES | OXFORD | CANTERBURY | CAMBRIDGE DL | CAMBRIDGE L | ASCOT DL | ASCOT L | CLIPPER |
|-----------------------------------|-----------|------------|--------------|-------------|-----------|-----------|-----------|
| BERTHS | 4/8 | 4/8 | 4/6 | 4/6 | 4/6 | 4/6 | 4/6 |
| LOCKER CUSHIONS | 2 | 2 | 2 | 2 | 2 | 2 | N/A |
| BACKREST | OPT | OPT | OPT | OPT | OPT | OPT | N/A |
| TABLE | OPT | OPT | OPT | OPT | OPT | OPT | OPT |
| AWNING | 490 X 400 | 420 X 320 | 420 X 300 | 420 X 300 | 420 X 220 | 420 X 220 | 380 X 220 |
| AWNING ROOF LINER | STD | STD | STD | STD | STD | STD | STD |
| ZIPPED SUN CANOPY | N/A | OPT | N/A | N/A | N/A | N/A | N/A |
| SIDE WALL | N/A | OPT | N/A | N/A | N/A | N/A | N/A |
| SUN CANOPY | N/A | N/A | OPT | OPT | OPT | OPT | OPT |
| JOCKEY WHEEL | STD | STD | OPT | OPT | OPT | OPT | N/A |
| SPARE WHEEL | STD | STD | OPT | OPT | OPT | OPT | OPT |
| KITCHEN | STD | STD | STD | N/A | STD | N/A | N/A |
| BRAKES | STD | OPT | OPT | OPT | OPT | OPT | N/A |
| 145 X 10 RADIAL WHEELS | STD | STD | STD | STD | STD | STD | 400 X 8 |
| FRIDGE BOX | OPT | OPT | OPT | OPT | OPT | OPT | N/A |
| WIND DOWN CORNER STEADIES | STD | OPT | OPT | OPT | OPT | OPT | N/A |

STD: Standard
OPT: Optional
N/A : Not Available

Note: All Conway Trailers are plated showing a maximum gross weight. This can be increased or decreased by Conway on request, to suit towing vehicle. Maximum gross weight can be up to 550kg unbraked, 600kg braked. If in doubt consult your dealer.



Sun canopy



Brakes and jockey wheel



Wardrobe bar



Underbed tent and groundsheet



Backrest and table



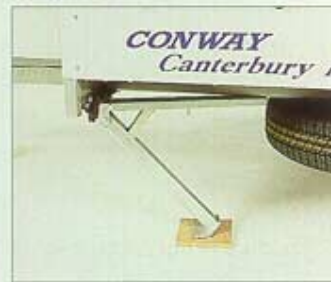
Carry rack



Side storage bracket



Fridge box



Wind down corner steadies

| FOLDING CAMPER ACCESSORIES/FEATURES | CARDINAL CLUBMAN | CARDINAL | CRUISER | CHALLENGER |
|-------------------------------------|------------------|----------|---------|------------|
| 3-WAY FRIDGE | STD | OPT | STD | N/A |
| MAINS ELECTRIC | STD | OPT | OPT | N/A |
| SECURITY BOX | STD | OPT | OPT | OPT |
| INNER BEDROOMS | STD | STD | STD | STD |
| BRAKES | STD | STD | STD | STD |
| SPARE WHEEL | STD | STD | STD | STD |
| GAS BOTTLE BOX | STD | STD | STD | STD |
| FRIDGE BOX | N/A | N/A | N/A | STD |
| SIDE STORAGE BRACKETS | N/A | N/A | N/A | OPT |
| UNDER FLOOR HEATING | OPT | OPT | OPT | OPT |
| UNDERBED STORAGE TENT | OPT | OPT | OPT | OPT |
| AWNING | OPT | OPT | OPT | OPT |
| AWNING GROUND SHEET | OPT | OPT | OPT | OPT |
| SUN CANOPY | OPT | OPT | OPT | OPT |
| AWNING W.C. EXTENSION | OPT | OPT | N/A | N/A |
| INTERNAL AWNING W.C. TENT | N/A | N/A | OPT | N/A |
| ENTRANCE STEP | STD | STD | STD | STD |



Kitchen, two burner hob and grill



3 way fridge



Security box



Under floor heater

COME AND JOIN US

Buying a Conway is merely the beginning of what will be a long relationship between you, the customer and Conway.

Conway owners are only limited by their imagination and once you have tasted the flavour of "The great outdoors", then automatically, a whole new world unfolds before you.

Sharing these experiences with others is all part of the fun of camping. The pleasures that this camaraderie provides is the reason why Conway have firmly supported the development of the Conway Owners Club. An exciting venture started in 1988 by extremely enthusiastic Conway users.

From their original seed of an idea, prompted by the enjoyment they were getting from their Conway, has grown the Conway Owners Club. A well equipped and highly organised club with a growing membership from all over the country and from all walks of life.

Today this club goes from strength to strength with a busy programme of truly varied activities taking place all year.

Tours of the Conway factory at Appley Bridge are organised whilst the impressive sight of hundreds of Conways at the many rallies held by the club, both in the UK and on the continent, are an unforgettable experience indeed.

Complementing this active programme, the Conway Owners Club offers many other exciting reasons for joining. Discounts on product insurance, quarterly news magazines and regular updates on product information are just part of the many services open to club members.

Last year, the club even produced its own site guide, produced entirely by members recommendations.

The emphasis at the Conway Owners Club is very much placed on the family atmosphere, choosing sites with good facilities and with plenty of opportunities to keep all the family fully occupied.

Significantly, the spirit of involvement fostered by the Conway Owners Club has played a key role in the product development programme at Conway's factory. Practical suggestions and tips from members have been incorporated into many of the new products seen within this brochure. Proof indeed that at Conway we listen.

To find out more about membership contact:

Conway Owners Club,
354, Leyland Road, Penwortham,
Preston, Lancashire, PR1 9SU.
Tel: 0772 315568 (24hr. Answerphone)



Conway Products Limited
Skull House Lane, Appley Bridge,
Wigan WN6 9DW.

Due to the process of ever continuing improvement, some details
contained in this brochure may change. However, the information is
correct at the time of going to press.

Dealer stamp

Designed and Produced by Magic Mouse Limited.
Lit. No. CONE/10.92/93

