

**STARCRAFT**

CAMPING | pure and simple.

**2015 Camping Trailers**

Comet & Starflyer by Starcraft®

# CAMPING TRAILERS



- 7-year tent warranty
- one-piece fiberglass roof
- 1,050-lb. rated bunk-ends
- rear stabilizer jacks





Comet 3611HW Interior



1

3611HW

- 1 Energy-Efficient 3-Burner Stove with Recessed Stove Ring (Elite Package 3611HW)
- 2 Convenient Interior Storage (Elite Package 3611HW)
- 3 2 Cu. Ft. 3-Way Refrigerator (3 Cu. Ft. on Elite Package 3611HW)
- 4 Shower/Toilet Combo, 6 Gal. Water Heater (Select Models), Black Water Holding Tank (Elite Package 3611HW)
- 5 Spacious Interior Sleeps up to 6
- 6 Exterior, Carry-Out Stove (N/A 3611HW)



4

3611HW



2

3611HW



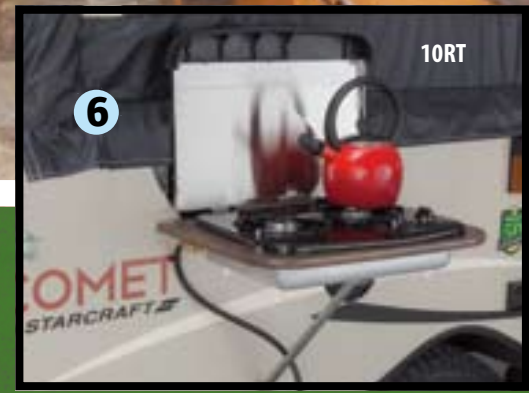
5

10RT



3

3611HW



6

10RT

STARCRAFT  
**COMET**



**RT Series**

15" mud tires | 5" of extra ground clearance  
Two well-equipped floorplans | Electric brakes and E-Z lube axles

STARCRAFT  
**COMET**

Comet camping trailers offer comfort and convenience with 14 flexible floorplans. You'll also get peace of mind with a 7-year AquaShield Aqualon tent warranty and 25 year warranty on the floor and lifter system. With 1,050 lb. rated bunk ends and off-road amenities, Comet comes with everything needed for an enjoyable camping experience - pure and simple.

# STARCRAFT COMET



## Hardside Series

New for Model Year 2015 | Durable yet light hardside construction

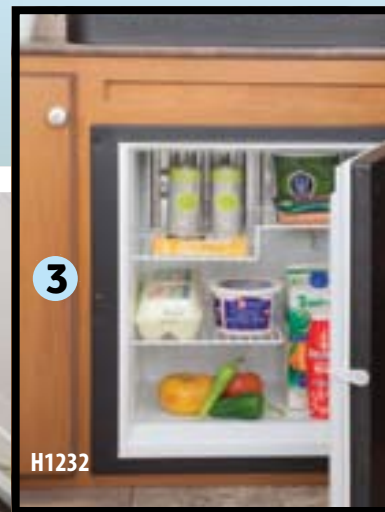
Easy set up | Four well-equipped floorplans



2

H1232

- 1 New Hardside Series can sleep up to 4
- 2 Convenient Exterior Shower
- 3 2-Cu. Ft. 3-Way Refrigerator



H1232



1

H1232

## STANDARDS AND OPTIONS

### STANDARD EXTERIOR EQUIPMENT

- 6-gal. gas water heater (n/a 817 and 1021)
- 20-lb. propane bottle
- 30-lb. propane bottle (RT and 3611HW)
- 15" mud tires (10RT and 12RT)
- 84"- wide storage deck (select models)
- 120-volt G.F.C.I.-protected exterior receptacle
- Aluminum rims (RT)
- AquaShield Aqualon water repellent sectionalized tent with 7-year warranty (n/a Hardside)
- Automotive roof seal
- Bunk-end tents permanently attached to bed base (n/a Hardside)
- Domed, seamless fiberglass roof (n/a Hardside)

Double entrance step (12RT)

Entrance door, one-piece construction (n/a Hardside)

E-Z hinge bed supports (n/a Hardside)

E-Z Lube axles

Floor constructed of Structurwood and sealed with a Darco underbelly

Front diamond plate

Front storage deck (select models)

Lifter system, Goshen Stamp with extra wide lifter arms (n/a Hardside)

Outside shower (n/a 817 and 1021)

Patio light with amber lens

Prep for A/C accommodating all roof-mounted A/Cs (n/a Hardside)

Scratch-resistant, embossed aluminum exterior finish (n/a Hardside)

Stepper entry door (n/a RT and Hardside)

### STANDARD INTERIOR EQUIPMENT

- 2 cu. ft. 3-way refrigerator (n/a 3611HW)
- 2nd table with pedestal leg (1019)
- 3-burner stove with recessed stove ring (3611HW)
- 3 cu. ft. refrigerator (3611HW)
- 12-volt electrical system with 25-amp 110-volt converter (35-amp on 3611HW)
- 120-volt G.F.C.I. protected interior receptacle
- 16,000-BTU furnace (n/a Hardside)
- Bath/shower (select models)
- Honey Glazed Cherry cabinetry
- Microwave (3611HW and Hardside)
- Microwave
- Non-sliding, 4" deep cushions for dinette with reversible EZ-clean vinyl backs
- Privacy bunk curtains (n/a Hardside)
- Quilted bed mats (n/a Hardside)
- Stainless-steel carry-out stove (n/a 3611HW)
- Tinted vinyl windows with fine mesh bug screen (n/a Hardside)
- Window drapes with valances (n/a Hardside)

### CUSTOMER CONVENIENCE PACKAGE (MANDATORY OPTION)

- Canopy awning with adjustable tilt (n/a Hardside)
- Electric brakes
- Spare tire, carrier and cover
- Stabilizer jacks with sand pads (4)

### OPTIONS

- Aluminum rims
- Front storage box with 2 sliding storage trays (1021, 1225, 1226 and 10RT)
- CAMPERS PACKAGE (OPTIONAL - n/a Hardside)**
- Bed mat heaters (2)
- Exterior speakers, high output marine-grade (2)
- Northern Breeze power fan
- Power roof lift
- Stereo with MP3 input jack and 2 speakers
- ELITE PACKAGE — 3611HW (OPTIONAL)**
- Double-bowl sink
- Oven

## HARDSIDE SERIES

### STANDARD EXTERIOR EQUIPMENT

- 2 - 20-lb. propane bottles w/ cover
- 6-gal. gas water heater
- 15" mud tires (H1232FD)
- Aluminum rims
- Cable TV prep
- Dark tinted safety glass windows
- Double entrance step (H1232FD)
- E-Z Lube Torsion axles
- Fiberglass laminated roof

Floor constructed of Structurwood and sealed with a Darco underbelly

Heavy-duty A-frame construction

Laminated vacuum bonded fiberglass sidewalls

Large folding grab handle

Outside grill

Outside shower

Slide storage tray

### STANDARD INTERIOR EQUIPMENT

- 1 large and 2 small tinted skylights with shades
- 2 cu. ft. 3-way refrigerator
- 3-burner stove top
- 12-volt electrical system with 35-amp 110-volt converter
- 120-volt G.F.C.I. protected interior receptacle
- 10,000-BTU Cool Cat heat pump
- AM/FM stereo with MP3 input jack and outside speaker
- Evergreen mattress w/ bedspread
- Microwave
- Window drapes

### OPTIONS

- 16,000-BTU forced air furnace
- Awning/screen room assembly
- Northern Breeze power fan
- Portable cassette toilet



Scan for a complete list of Standards and Options

## SPECIFICATIONS

FLOORPLAN	EXTERIOR LENGTH	CAMPSITE LENGTH	TRAVEL HEIGHT	UNLOADED VEHICLE WEIGHT (LBS.)	DRY HITCH WEIGHT (LBS.)	GROSS VEHICLE WEIGHT RATING (LBS.)	CARGO CARRYING CAPACITY (LBS.)	FRESH WATER CAPACITY (GAL.) (INCLUDES WATER HEATER)	GRAY WASTE WATER CAPACITY (GAL.)	BLACK WASTE WATER CAPACITY (GAL.)
817	11' 7"	16' 2"	57"	1350	205	1995	645	10	N/A	N/A
1019	13' 6"	19' 2"	57"	1625	180	2350	725	34	N/A	N/A
1021	16' 6"	20' 11"	57"	1705	210	2450	745	10	N/A	N/A
1220	15' 6"	21' 2"	56"	1735	235	2550	815	34	N/A	N/A
1221	15' 6"	21' 2"	58"	1820	270	2550	730	34	N/A	5
1225	18' 6"	22' 11"	59"	2130	255	3000	870	34	N/A	N/A
1226	18' 6"	22' 11"	59"	2205	290	3000	795	34	N/A	5
3611HW	17' 11"	25' 4"	65"	2590	355	3300	710	34	N/A	11.2
10RT	16' 8"	20' 9"	66"	1890	215	2650	760	34	N/A	N/A
12RT	21' 5"	26' 10"	67"	2695	440	4850	2155	34	N/A	5
H1232	16' 2"	16' 3"	62"	1875	225	3250	1375	23	N/A	N/A
H1232MD	18' 8"	18' 8"	62"	2000	220	3250	1250	23	N/A	N/A
H12325B	18' 8"	18' 8"	62"	2020	286	3250	1230	23	N/A	N/A
H1232FD	22' 4"	22' 4"	70"	2360	355	4150	1790	23	N/A	N/A

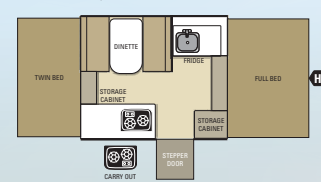
UNLOADED VEHICLE WEIGHT (UVW): Sometimes referred to as "Dry Weight," UVW means the typical weight of this trailer as built at the factory. The UVW, as used in product literature and other promotional materials, does not include cargo, fresh water, propane, options or dealer-installed accessories. The weights of certain options and/or option packages are not included in the UVW listed above. GROSS VEHICLE WEIGHT RATING (GVWR): GVWR means the maximum permissible weight of the trailer, including the UVW plus passengers, personal items, all cargo, fluids, options, and dealer-installed accessories. The GVWR is equal to or greater than the sum of the UVW and the

CCC. CARGO CARRYING CAPACITY (CCC): CCC means the maximum weight of all passengers, personal items, food, fresh water, propane, tools, other cargo and dealer-installed accessories that can be carried by the trailer. CCC is equal to or less than GVWR minus UVW. The addition of options will decrease the CCC. HITCH WEIGHT (HW): The hitch weight, as used in product literature and other promotional materials, does not include cargo, fresh water, propane gas, options or dealer-installed accessories. The addition of these types of items will either add to or subtract from the stated hitch weight. It is important for your safety and enjoyment that your tow vehicle be adequately sized

and equipped to tow and handle the GVWR of the RV you select. Review weights and rating of your tow vehicle and consult a competent advisor for questions or advice. Whether you are new to RVing or a veteran, get a feel for the performance of your tow vehicle and the RV together before heading out on the roadways. When you tow an RV, you must drive differently than you do when driving a single vehicle. Practice hooking up, driving, backing up and braking in a safe environment or seek out professional instruction. Starcraft affixes a weight label to each RV which lists weight information for that vehicle. See specification chart above.

## FLOORPLANS

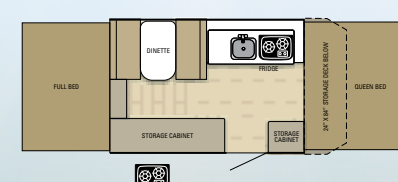
### COMET 817



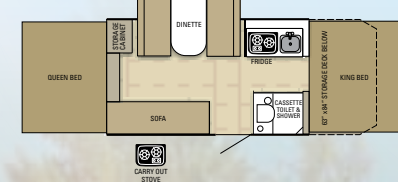
### COMET 1019



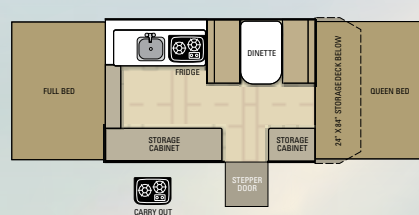
### COMET 10RT



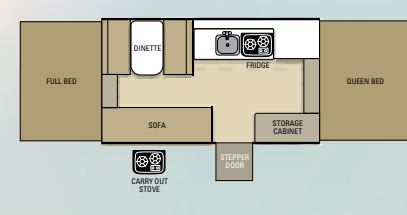
### COMET 12RT



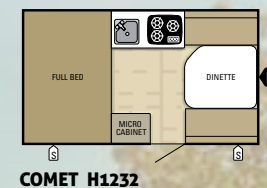
### COMET 1021



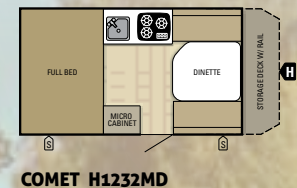
### COMET 1220



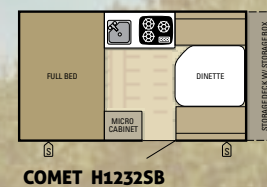
## HARDSIDE SERIES



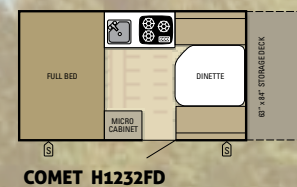
### COMET H1232



### COMET H1232MD



### COMET H12325B



### COMET H1232FD

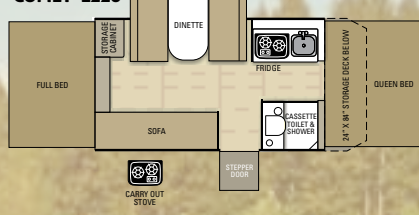
### COMET 1221



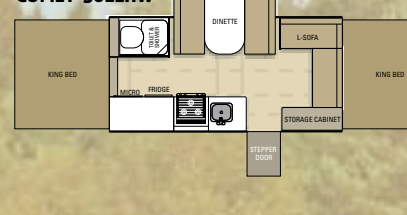
### COMET 1225



### COMET 1226



### COMET 3611HW



## PEACE OF MIND - PURE AND SIMPLE

Starcraft is proud to back their products with one of the best and most comprehensive warranty programs in the industry. Starcraft is determined to make every camping experience enjoyable by offering peace of mind - pure and simple. See back for details.



Starflyer 10 Interior



- 1 Acrylic Sink With Hand-Pump Faucet And 5-Gallon Water Jug
- 2 Top Box Extrusion, Solid One-Piece Design That Fits Over The Sidewall
- 3 One-Piece Entrance Door
- 4 Convenient Pull-Out Entry Step
- 5 Non-Sliding Deep Cushions With Reversible E-Z Clean Vinyl Backs

## STANDARDS AND OPTIONS

### STANDARD EXTERIOR EQUIPMENT

- 120-volt G.F.C.I. protected exterior receptacle
- Bumper-welded steel construction
- Corrosion-resistant frame
- Domed, seamless fiberglass roof
- Entrance door, one-piece construction
- E-Z hinge bed supports
- E-Z Lube axles
- Leveling tongue jack
- Lifter system, Goshen Stamp with extra wide lifter arms
- Scratch-resistant, embossed aluminum exterior finish

### STANDARD INTERIOR EQUIPMENT

- 12-volt electrical system with 25-amp, 110-volt converter
- 12-volt interior lighting
- 120-volt G.F.C.I. protected interior receptacle

- Booth dinette
- Honey Glazed Cherry cabinetry
- Carry-out dinette table
- Coordinated furniture, designed and made by Starcraft
- Mildew-resistant aluminum ceiling
- Non-sliding, 4" deep cushions for dinette with reversible E-Z-clean vinyl backs
- Privacy bunk curtains
- Tinted vinyl windows with fine-mesh bug screen
- Window drapes and valances

### CUSTOMER CONVENIENCE PACKAGE (MANDATORY OPTION)

- A/C prep
- Rear stabilizer jacks with sand pads
- Sink with hand pump faucet and 5-gal. water jug
- Step entry door

### CAMPERS PACKAGE (OPTIONAL)

- 2-burner range
- 2 cu. ft. refrigerator
- 20-lb. propane bottle
- 16,000-BTU furnace

### OPTIONS

- Canopy awning with adjustable tilt
- Electric brakes
- Spare tire



Scan for a complete list of Standards and Options

## SPECIFICATIONS

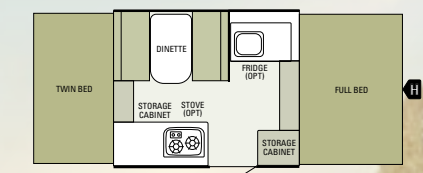
FLOORPLAN	EXTERIOR LENGTH	CAMPSITE LENGTH	TRAVEL HEIGHT	UNLOADED VEHICLE WEIGHT (LBS.)	DRY HITCH WEIGHT (LBS.)	GROSS VEHICLE WEIGHT RATING (LBS.)	CARGO CARRYING CAPACITY (LBS.)	FRESH WATER CAPACITY (GAL.)	GRAY WASTE WATER CAPACITY (GAL.)	BLACK WASTE WATER CAPACITY (GAL.)
8	11' 7"	15' 10"	52"	1185	200	1800	615	5.25	N/A	N/A
10	13' 4"	19' 6"	53"	1325	140	1975	650	5	N/A	N/A

UNLOADED VEHICLE WEIGHT (UVW): Sometimes referred to as "Dry Weight," UVW means the typical weight of this trailer as built at the factory. The UVW, as used in product literature and other promotional materials, does not include cargo, fresh water, propane, options or dealer-installed accessories. The weights of certain options and/or option packages are not included in the UVW listed above. GROSS VEHICLE WEIGHT RATING (GVWR): GVWR means the maximum permissible weight of the trailer, including the UVW plus passengers, personal items, all cargo, fluids, options, and dealer-installed accessories. The GVWR is equal to or greater than the sum of the UVW and the

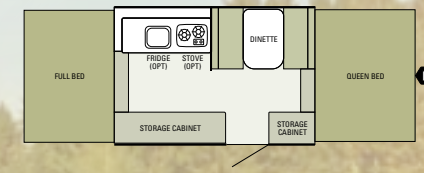
CCC. CARGO CARRYING CAPACITY (CCC): CCC means the maximum weight of all passengers, personal items, food, fresh water, propane, tools, other cargo and dealer-installed accessories that can be carried by the trailer. CCC is equal to or less than GVWR minus UVW. The addition of options will decrease the CCC. HITCH WEIGHT (HW): The hitch weight, as used in product literature and other promotional materials, does not include cargo, fresh water, propane gas, options or dealer-installed accessories. The addition of these types of items will either add to or subtract from the stated hitch weight. It is important for your safety and enjoyment that your tow vehicle be adequately sized

and equipped to tow and handle the GVWR of the RV you select. Review weights and rating of your tow vehicle and consult a competent advisor for questions or advice. Whether you are new to RVing or a veteran, get a feel for the performance of your tow vehicle and the RV together before heading out on the roadways. When you tow an RV, you must drive differently than you do when driving a single vehicle. Practice hooking up, driving, backing up and braking in a safe environment or seek out professional instruction. Starcraft affixes a weight label to each RV which lists weight information for that vehicle. See specification chart above.

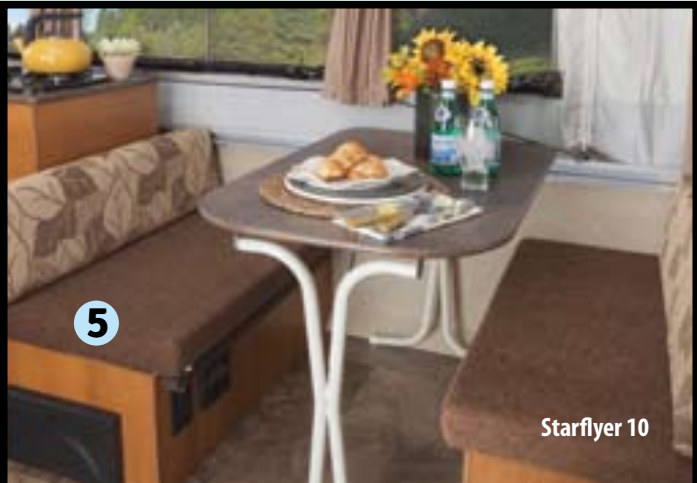
## FLOORPLANS



STARFLYER 8



STARFLYER 10



Starflyer 10



STARFLYER

One of the most economical and popular entry-level campers, the Starflyer is a great option that is towable by most standard family vehicles. It comes in 8' and 10' floorplans (and sleeps 5 to 6 people) and is easy to set up so you can begin your camping experience in minutes. Enjoy comfort while camping – pure and simple.



For a copy of the limited warranty with full terms and conditions, ask your local Starcraft dealer.

## 50 YEARS OF AFFORDABLE DURABILITY

Starcraft builds a variety of RVs, from the entry-level Starflyer camping trailer to our premium-rated Travel Star travel trailer. Throughout each unit, it is evident to customers that our Amish craftsmanship and attention to detail are what make Starcraft products unique and family-friendly.

Staying true to our pursuit of affordability and durability, we use the highest quality materials available, state-of-the-art production techniques and time-tested design. We put all of our time and effort into making a quality camper at an affordable price.

What started out five decades ago as an idea to provide families with a way to reconnect and enjoy the great outdoors has grown into a company that takes great pride in saying that Starcraft means Camping - Pure and Simple.



### WARRANTIES

Beyond Starcraft's 2-year limited warranty, camping trailers come with a 7 year warranty on the AquaShield Aqualon tent, 5 years on the roof and frame and 25 years on the floor and Goshen Stamp lifter system.



### ROADSIDE ASSISTANCE

Travel worry-free with the complimentary 1-Year Roadside Assistance program, which gives you immediate access to dependable roadside assistance with a simple phone call (available at participating dealers).



### DURABLE CONSTRUCTION



One-piece, domed fiberglass roof with pebble finish and laminated side panels protects the interior wood while an integrated one-piece top box runs the length of the wall, locking into select model sliderooms, adding strength. With a 7-year tent warranty, our mold resistant, double-stitched AquaShield Aqualon material doesn't stretch, shrink or crack, providing long-lasting durability even when it's up against Mother Nature (Comet).



## PEACE OF MIND - PURE AND SIMPLE

The Starcraft warranty is a manufacturer's limited warranty. Each Starcraft is warranted to the original purchaser for twenty-four (24) months from the original date of purchase against defects in materials and workmanship. Starcraft's limited warranty is not transferable. For a copy of the limited warranty with full terms and conditions, ask your local Starcraft dealer.

FOLLOW US ON  

© Starcraft RV • 536 Michigan St., Topeka, IN 46571    
www.starcraftcamping.com

See dealer for further information and prices. All information in this brochure is the latest available at the time of publication approval. Starcraft reserves the right to make changes and to discontinue models without notice or obligation. Photos in this brochure may show optional equipment and props for photography purposes. RVs built for sale in Canada may differ to conform to Canadian codes.

[WWW.STARCRRAFTCAMPING.COM](http://WWW.STARCRRAFTCAMPING.COM)

VISIT OUR WEBSITE for more information or to find a dealer near you.



**eco** advantage™

The Starcraft EcoAdvantage is our company's commitment to protecting the environment. Scan this QR code with your smartphone to watch a video about our efforts and the impact we're making on our planet.