



CONQUEST ERECTING INSTRUCTIONS

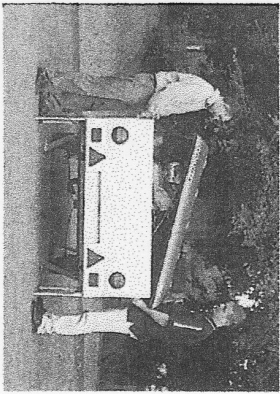
Main Cabin

1 - 8

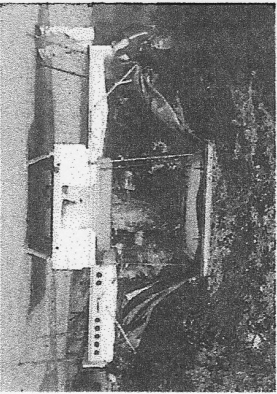
Awning Instructions

1 - 4

The following instructions are intended as a step-by-step guide to help you erect your Conway unit. Please read your Owners Manual thoroughly where you will find other helpful information within the section on Pitching.



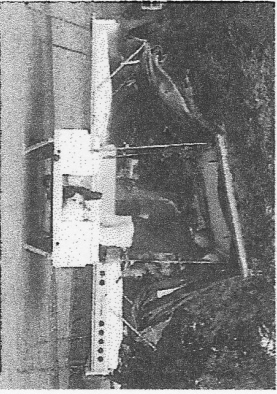
1. Release roof catches, drop kitchen support legs and secure with jackleg screws. Remove the 7 pin plug from socket below the kitchen unit. Lift roof slightly and remove kitchen unit from trailer. Trailer can then be levelled using wind down corner steadies. Release handwheels under trailer and retract the two kitchen support bars.



3. Release catches and slide out near-side bed and adjust to level as No. 2.



2. Release bed board front end catch on off-side bed and ensuring the roof is lifted clear of trailer sides, pull out bed until securing pins automatically drop into holes in bed track. Release bed support leg frame and hinge down into position-adjust feet to level bed.



4. Enter trailer and raise roof until locked in position by button clips.



5. Lift offside bed board slightly with handle attached, to allow the side panel to be hinged into place and secured with catch.

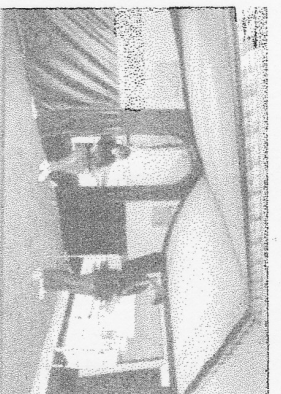


6. Release the roof straps holding the front and rear canvas walls.



7. Extend 4 x diagonal bed end poles to
a) 5th hole whilst weathering the canvas and
b) to the centre hole for normal use subsequently, adjusting to suit the site level conditions later.

Close all zips and starting at the drawbar end, peg the cabin canvas down as tight and square as possible.



8. Note: The cooker unit can be used either in the lift off kitchen block or on the drawbar end shelf unit inside the cabin.

To fold the unit - reverse the above procedures until you get to the bedboards. Place the two smaller dayseat cushions on the inboard edge of the off-side bed mattress. Release the auto bed securing catches at both ends before securing the bed support leg frame in the undetbed clips provided. Push in the off-side bed first. Check that the canvas is clear of the bed slides/tracks and secure with the end catch.

Release the auto catches on the near-side bed, fold the bed support leg frame and push in the bedboard, checking that the canvas is again clear of the slides/tracks.

Keep the roof as level as possible until the bed is in and secured with the end catch.

Wind up the rear corner steady legs. Slide out the kitchen support bars and lock in position with the handwheels (jack leg screws).

Fit the kitchen unit to the trailer and secure with the catches.

* Remember to connect the kitchen 7 pin plug to the trailer socket.

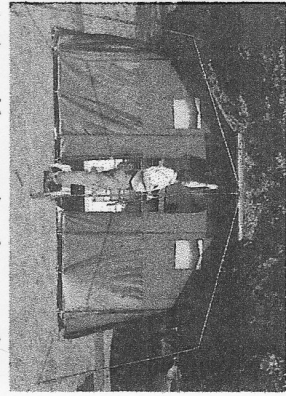
Lift the roof slightly to ensure that no canvas is trapped between the roof and the trailer sides.

Finally close the lid and secure with the four catches.

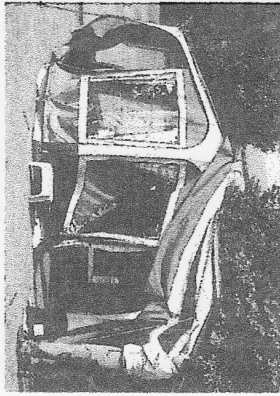
Wind up the front corner steadies.



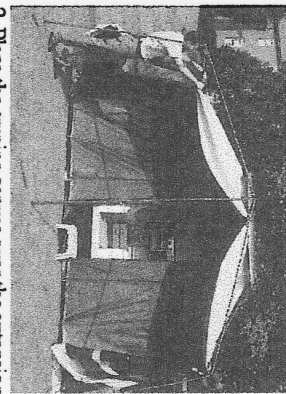
CONQUEST AWNING INSTRUCTIONS



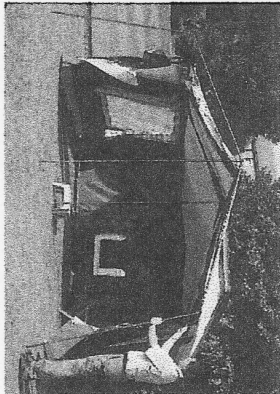
1. Assemble extension frame as shown, fitting the side roof poles to the cabin frame (male/female fitting) first. Connect the extension front $\frac{1}{2}$ ' frame with centre leg to the side roof poles and finally, hook the centre roof pole to the underside of the roof. Pivot this pole to connect to the centre front. **Do not tension/extend the frame at this stage.**



3. Zip the canvas front panel to the awning canvas. This will be easier to do without the two zip out window/door panels fitted (as shown). Fit the three peak canopy poles to the ext. frame front stub poles and the pockets of the peak canopy canvas. Close all zips, tension the ext. frame roof poles, adjust the ext. frame legs to align with cabin and peg down. Starting at the corners ensure that the canvas is taut. Check that zip cover flap is covering the zip correctly.



2. Place the awning canvas over the extension frame and zip to the cabin canvas.
NOTE: The zip cover flap with elastic cord tensioner should be towards the front. Pull canvas forward and locate over stub poles.



4. To fit the optional annex, remove canvas front panel and peak canopy poles from front of awning. Zip annex canvas to the awning canvas ensuring the zip cover flap is towards the front. Place annex canvas on top of the awning canvas and fit annex frame to the front of the ext. frame. Pull the annex canvas forward and repeat as for fitting the awning canvas.