



# ERECTING INSTRUCTIONS

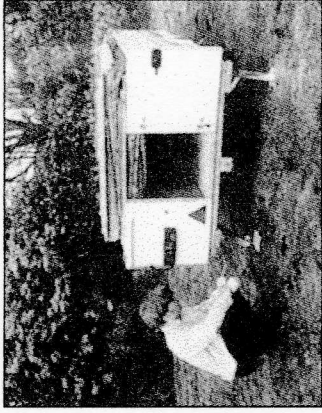
## COUNTRYMAN ERECTING INSTRUCTIONS

The following instructions are intended as a step-by-step guide to help you erect your Conway Unit. Please read your Owners Manual thoroughly where you will find other helpful information within the section on pitching.

- Main Cabin 1-13
- Awning Extension 14-25
- Sun Canopy 26-31



1. Fully apply handbrake to a vertical position and level trailer by means of jockey wheel.

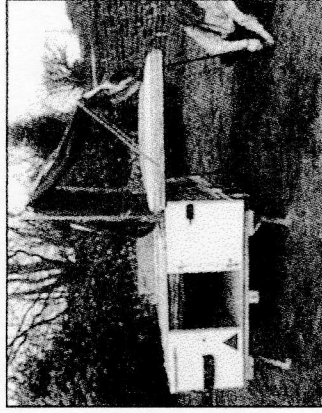


2. Remove waterproof cover. Open rear door, take out the corner steady brace. Lower the four corner steadies onto the wooden pads provided. If raining leave cover over kitchen.

**NOTE:** Corner steadies should not be used as jacks to level trailer.

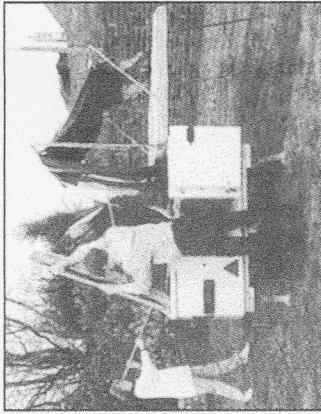


3. Hinge over right hand bed board using the lever assister. Ensure that the two legs hinge correctly to the ground.



4. Adjust the height of the bed legs if necessary to level the beds.

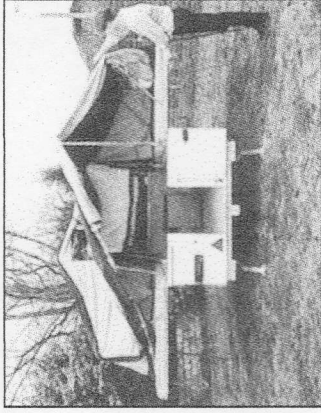
**COUNTRYMAN ERECTING INSTRUCTIONS CONTINUED**



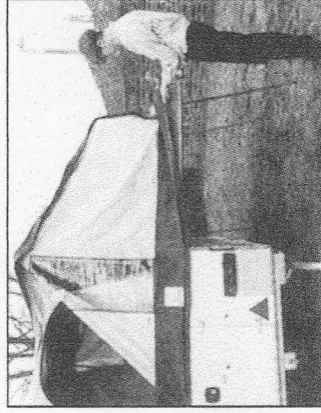
5. Repeat operating for left hand bed board, again ensuring that the bed is level.



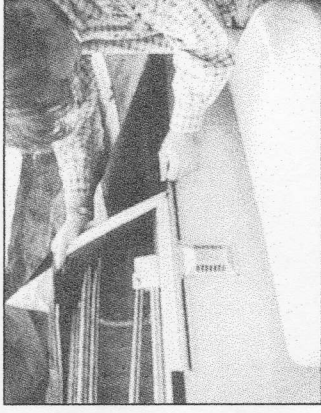
7. (B) Fit the sides of the kitchen extension as in 7a.



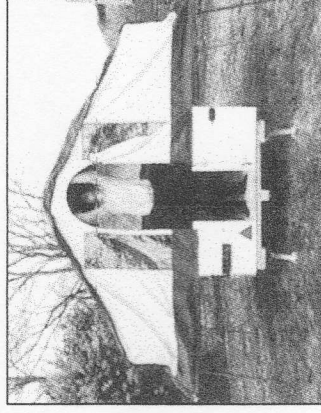
6. Pull the canvas over the frame. Do not fit around bed corners at this stage.



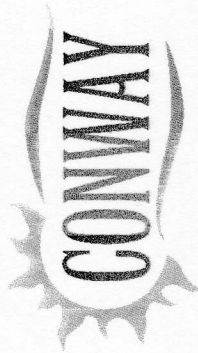
8. DOOR END - Open door in canvas, fit canvas to channel as per 7 a+b.



7. (A) Fit the canvas to draw bar end. Fold end of canvas under the body channel and press velcro to velcro.

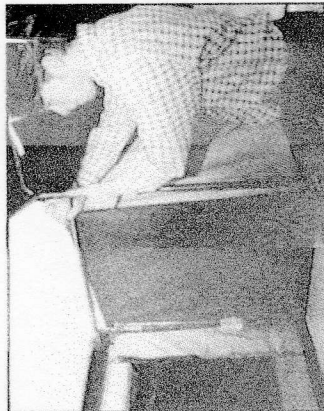


9. Enter unit, release front and rear right and left hand centre "A" frame poles from rubber retaining bands. Swing up centre roof pole and connect up at each end.

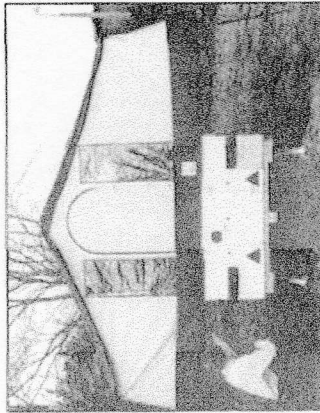


Freedom for Life

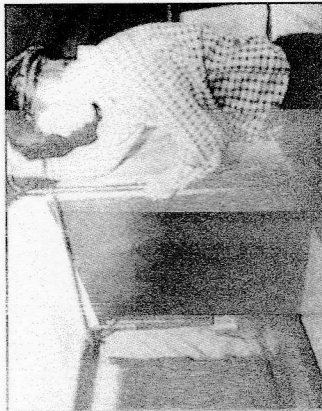
# COUNTRYMAN ERECTING INSTRUCTIONS CONTINUED



10. Lift up kitchen extension frame, lock out both right and left vertical poles. Remove rubber bands from swinging support arms and clip onto main frame at right and left.



12. Step outside the unit and close the trailer and canvas door. Elasticate the bed flaps onto buttons on underside of the bed boards. At draw bar end lift up the bed board lever before you elasticate, to ensure that the lever is secure. Step inside the unit again and adjust the spring buttons in the main framework where necessary.



11. Push out bed end support poles to central button position. Repeat for the central support uprights front and back.



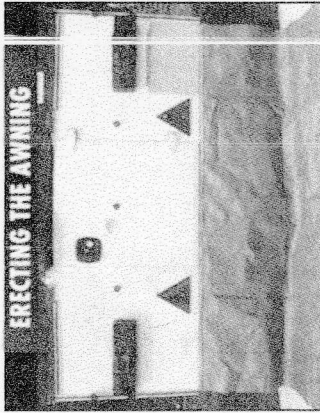
13. Lift one side of kitchen with handle and swing over the base support. Repeat on the other side. Then fold back the 'dry pack' plastic covers, unclip the mattress straps. Fit inner tents ensuring that the metal clips are fitted over the frame, and not under, otherwise it might chafe the canvas. NOTE: Inner tents are left and right handed. Curtain material side pelmet is fitted to kitchen end. Fit roof lining, kitchen pelmet and all curtains.

## SPECIAL POINTS TO NOTE:

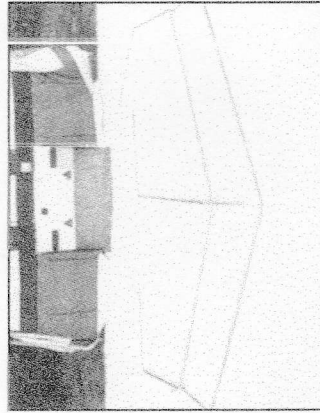
Inner tents, once fitted, can be unclipped when folding down and neatly folded under the waterproof mattress cover.  
 Ensure that day seat cushions are left in position when folding.  
 Kitchen extension frame must be folded with button in centre adjusting hole.  
 Position of cabin frames when folding - Lower the bed end frames to lowest position beyond adjusting holes.  
 Vertical poles - Right and left hand side vertical poles - lower to bottom adjusting hole only.  
 When folding ensure that the front and rear canvas walls are placed on top of the cabin frame and spread out neatly.

Note: New standard side shelf fits to right of kitchen unit. Light plug fits to 2 pin socket on worktop.

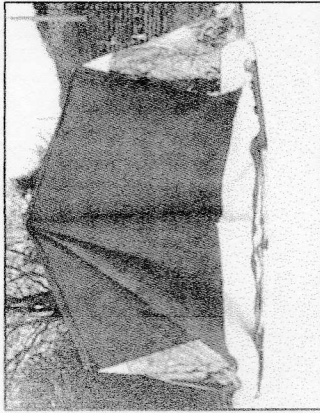
## COUNTRYMAN AWNING | INSTRUCTIONS



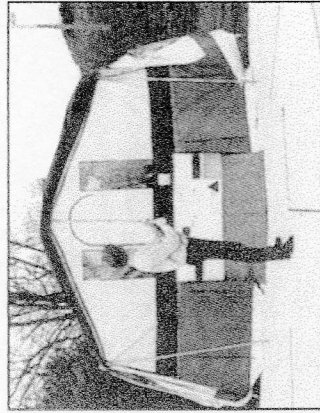
14. Slide awning draught skirt through awning channel.



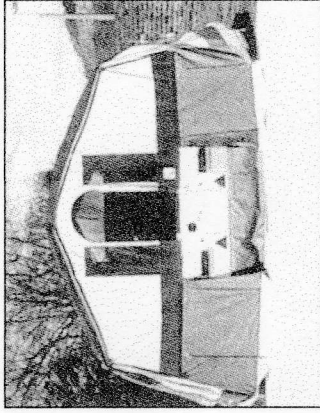
17. Assemble front awning "A" frame and fit centre leg. Lay out on floor as shown. Ensure that the legs are in 'broken' position.



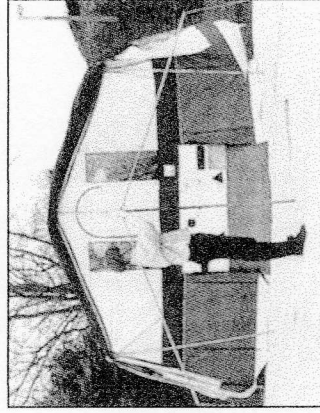
15. Zip awning onto main cabin canvas. Ensure that zip cover is pulled over zip.



18. Hook in two side roof support poles (long hooks) to main cabin frame. Hook in centre roof pole (short hook).



16. Roll awning back loosely and throw back onto the main cabin roof. Zip in the awning draught skirt at both sides.

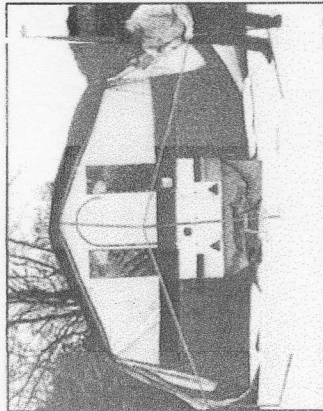


19. Lift up main "A" frame and locate centre roof pole to main "A" frame. Tighten up locking screw.

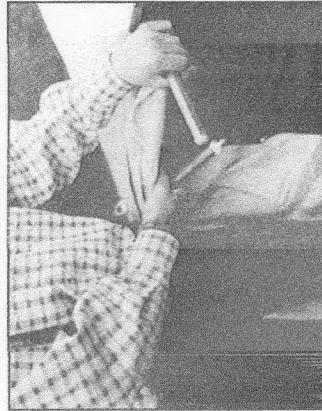


# COUNTRYMAN AWNING INSTRUCTIONS

Freedom for Life



20. Connect two side roof poles to front frame.

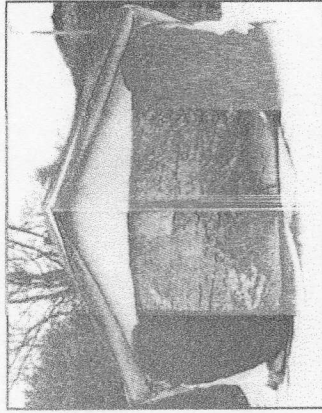


23. Fit three stub canopy poles and locate into holes of the stub canopy frame.

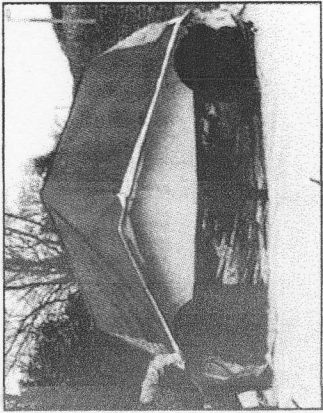
Note: 1994 to 1999 models only.



21. Pull canvas over frame and locate centre and corner gussets over the frame. Fit stub canopy poles into both awning frame and pockets in front edge of stub canopy canvas.

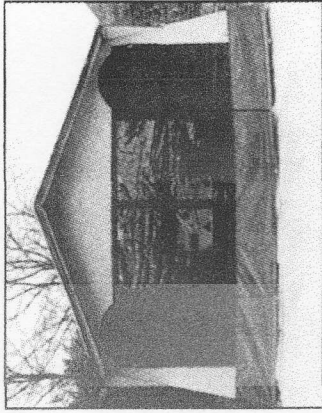


24. From inside lift up centre leg and lock into position. Repeat for the side legs. Make sure that the roof pole locking screws are slack and push frame out to tension canvas, ensuring that the stub canopy poles are located into stub canopy "A" frame. Tighten up locking screws.



22. Slide stub canopy front frame through sleeve.

Note: 1994 to 1999 models only.



25. Adjust vertical legs to required height. Peg out completely.

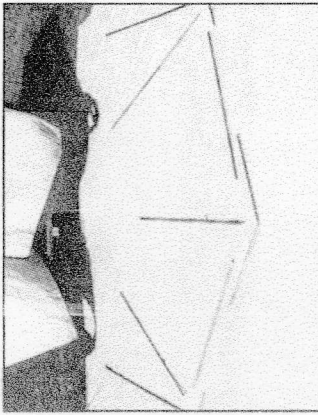


**COUNTRYMAN SUN CANOPY INSTRUCTIONS - DUAL FITTING 2001 ON**

*Freedom for Life*



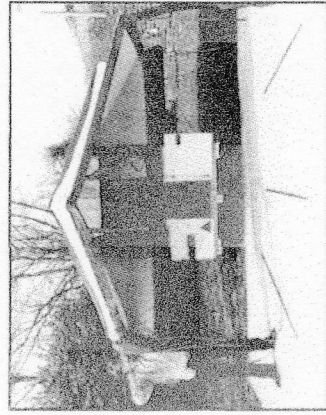
26. Zip on sun canopy to main cabin canvas and let canvas hang down over doorway. Note: with dual fitting model - lie canopy to front of awning frame under stub canopy and proceed to erect as follows using additional "swan neck" poles instead of hook poles.



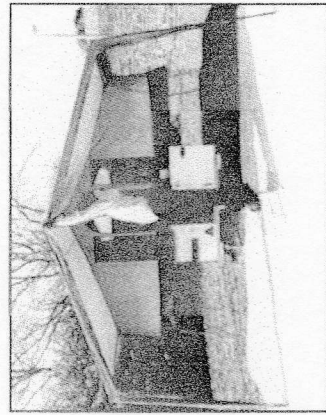
27. Lay out canopy frame as shown.



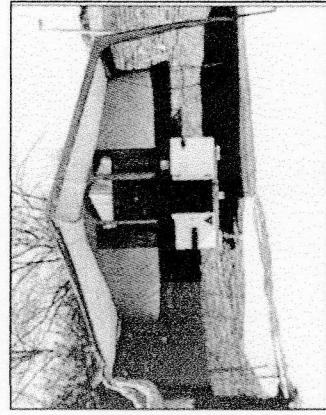
28. Connect the canopy front frames without the side legs. Feed frame through sleeve at front of canopy. Ensure that hole in centre frame is facing trailer.



29. Connect adjustable side legs to front frame.



30. Fit centre roof pole (short hook) to cabin frame. Extend and locate plastic spike into hole of centre "A" frame. Tension and lock up screw.



31. Fit left and right roof poles (long hooks) to cabin frame. With locking screws slack swing up and locate over spike on front frame. Tension out and lock up screw. Repeat for opposite side.



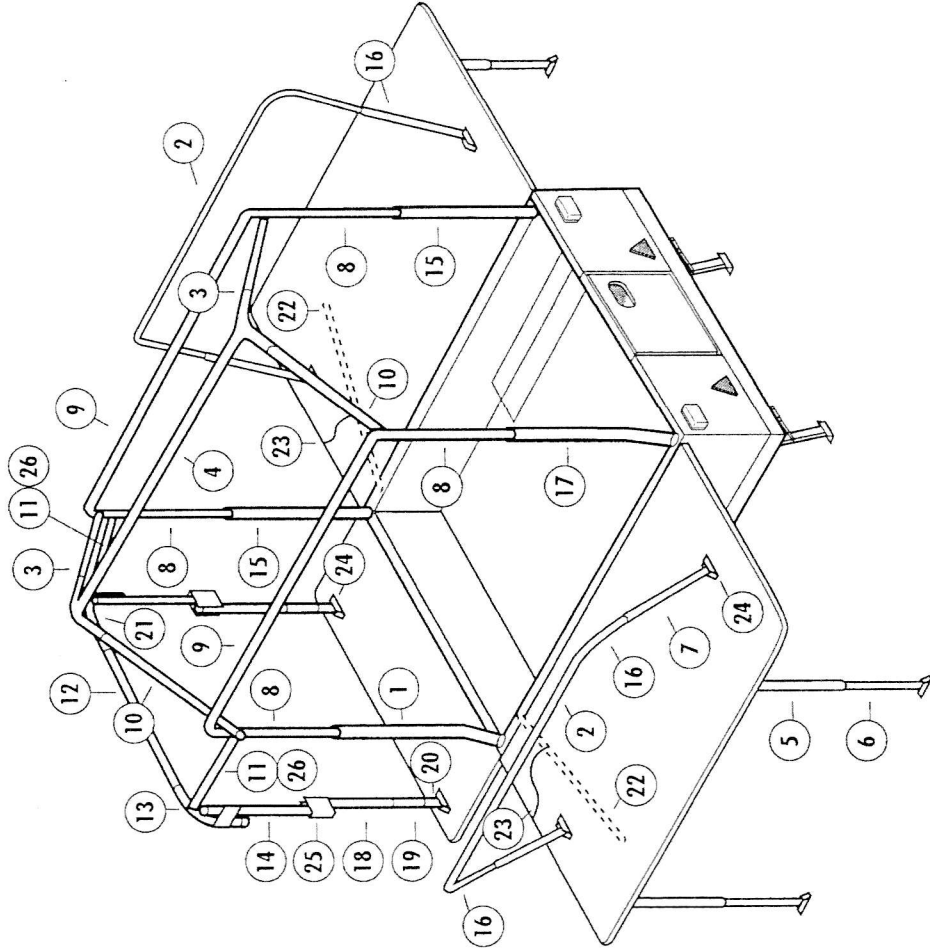
*Freedom for Life*

# COUNTRYMAN CABIN, BODY, SUN CANOPY & AWNING FRAME PARTS

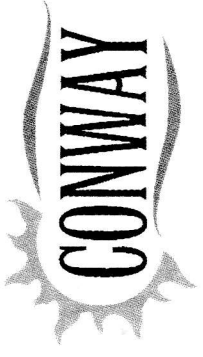
**NOTE:** Due to model differences it is vital to quote the Model Type and both Model No. and Serial No. visible on the Trailer Chassis Plate fitted to the nearside front corner, when ordering Cabin, Sun Canopy or Extension Frame Parts.

REF. NO.	QTY	DESCRIPTION
1	1	FRAME UPRIGHT - REAR
2	2	BED FRAME BOW
3	2	TIE POLE - CRIMPED
4	1	RIDGE POLE
5	4	BED SUPPORT LEG - UPPER
6	4	BED SUPPORT LEG - LOWER
7	4	BED FRAME UPRIGHT
8	4	CABIN FRAME UPRIGHT - TOP
9	2	CABIN FRAME BOW
10	2	TIE POLE
11	2	CORNER ROOF POLE - KITCHEN
12	1	ROOF POLE - KITCHEN
13	1	NEAR SIDE CORNER POLE - KITCHEN
14	2	CABIN POLE - UPPER - KITCHEN
15	2	CABIN FRAME UPRIGHT
16	4	BED FRAME UPRIGHT - TOP
17	1	FRAME UPRIGHT - FRONT
18	2	CENTRE POLE - KITCHEN
19	2	SUPPORT POLE - LOWER - KITCHEN
20	2	ANCHOR POLE - KITCHEN
21	1	OFF SIDE CORNER POLE - KITCHEN
22	2	BED LIFTER POLE
23	2	BED LIFTER CABLE
24	6	MOUNTING BRACKET - KITCHEN
25	2	CONNAUTOMATIC POLE GRIP
26	2	TORSION BAR CLIP

Cabin Frame Parts: Ref: CL1082



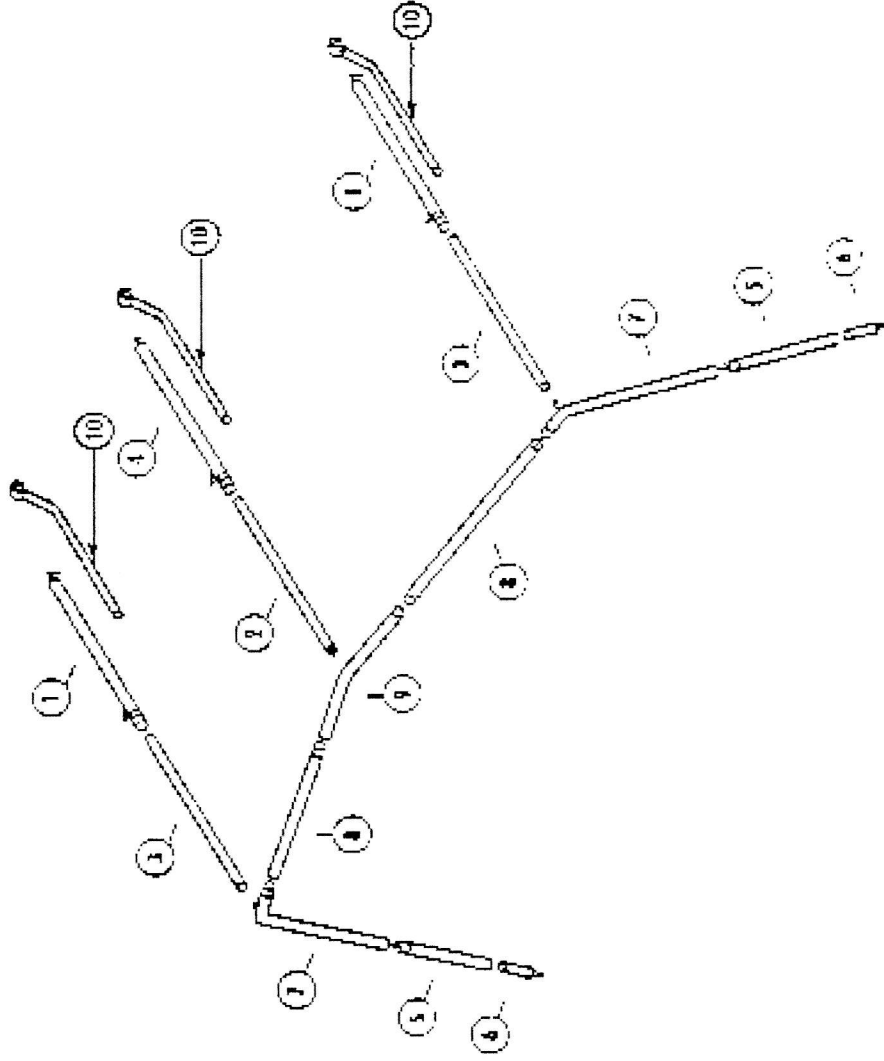
NOTES: Poles 2,6/8,9/3,4 are crimped together.



**COUNTRYMAN SUN CANOPY - REF. CL1089-A DUAL FITTING 2001 ON**

REF NO.	QTY	DESCRIPTION
1	2	ROOF ADJUSTER - LONG HOOK
2	1	ROOF POLE & SPIKE
3	2	ROOF POLE & EYELET
4	1	ROOF ADJUSTER - SHORT HOOK
5	2	LOWER SUPPORT LEG
6	2	ADJUSTABLE SPIKED FOOT
7	2	SPIKED BRANCH
8	2	ROOF POLE - FRONT
9	1	APEX ANGLE BRANCH
10	3	SWAN NECK POLES

Note: Dual fitting sun canopy frames have 3 additional "swan neck" poles for use when sun canopy is tied to front of awning. They clip onto the Awning frame.



NOTES: All pole sizes include Swage / Thumbscrews, Hooks and Nylon / Plastic Inserts + Steel Clips not included in pole sizes.

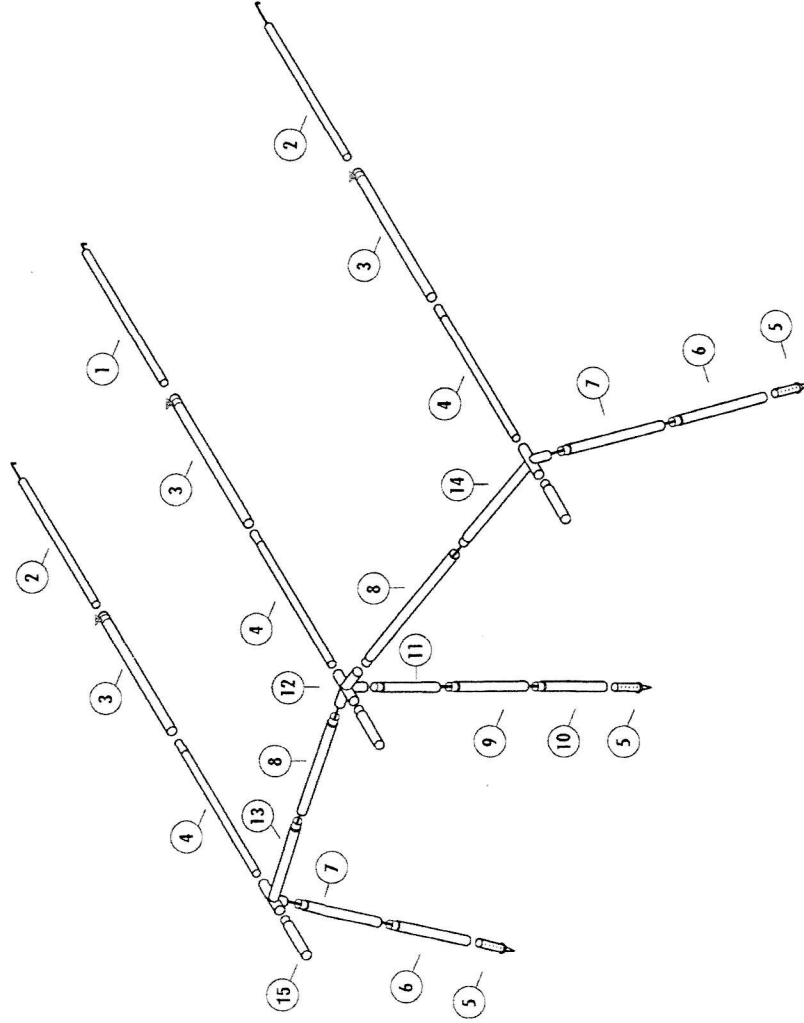




**2001-02 COUNTRYMAN AWNING FRAME PARTS - REF. CL1080-A**

*Freedom for Life*

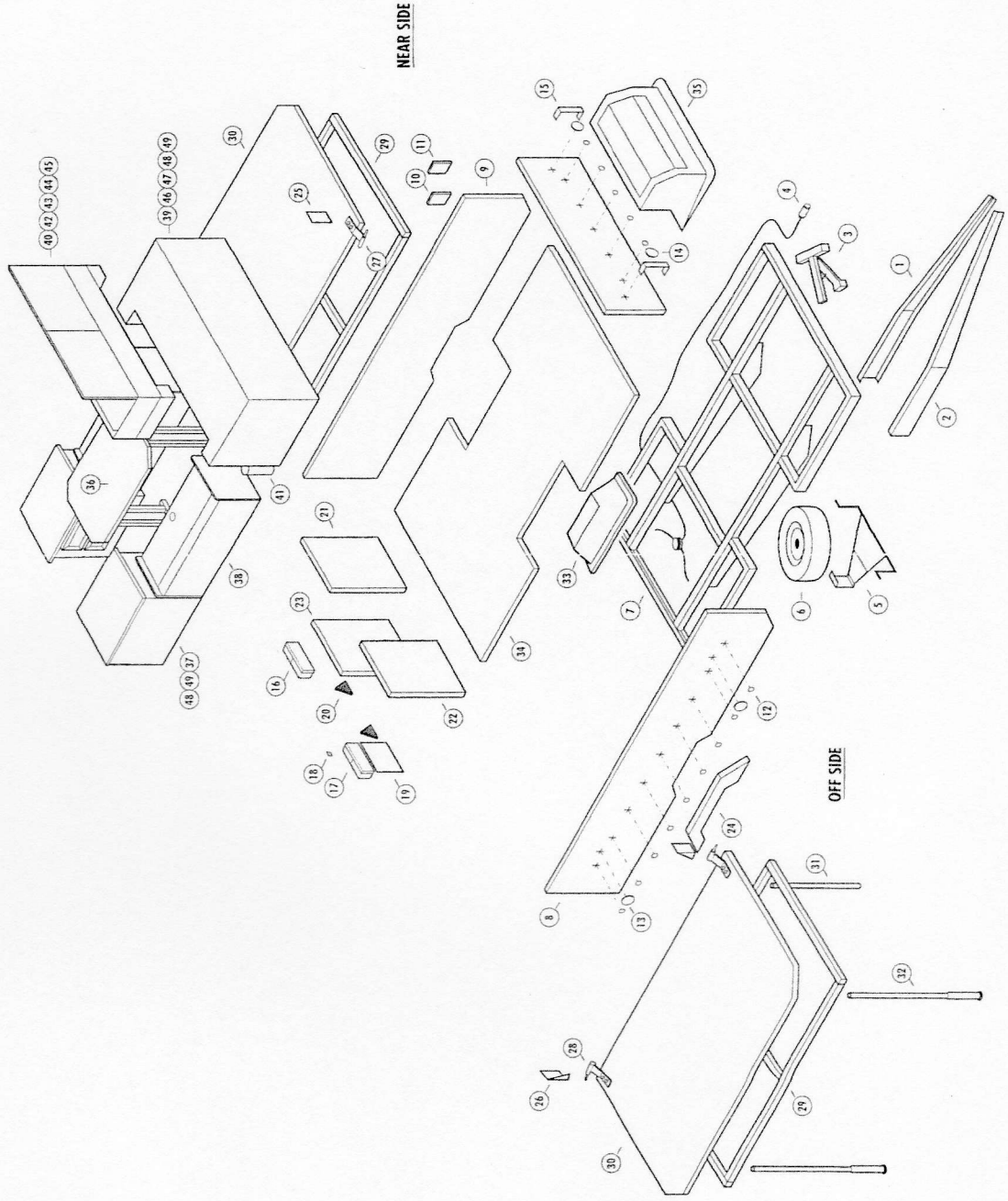
REF. NO.	QTY	DESCRIPTION
1	1	HOOKED POLE - SHORT
2	2	HOOKED POLE - LONG
3	3	ROOF POLE ADJUSTER
4	3	ROOF POLE
5	3	ADJUSTABLE FOOT
6	2	SUPPORT LEG - LOWER
7	2	SUPPORT LEG - UPPER
8	2	CENTRE BRANCH
9	1	SUPPORT LEG - CENTRE
10	1	SUPPORT LEG - LOWER
11	1	SUPPORT LEG - UPPER
12	1	CENTRE BRANCH - 5 WAY
13	1	LEFT HAND BRANCH - 4 WAY
14	1	RIGHT HAND BRANCH - 4 WAY
15	3	STUB CANOPY





**COUNTRYMAN - BODY & FURNITURE PARTS - REF. CL1091**

*Freedom for Life*





*Freedom for Life*

**COUNTRYMAN BODY FURNITURE**

REF NO.	QTY	DESCRIPTION
1	1	NEAR SIDE "A" FRAME MEMBER
2	1	OFF SIDE "A" FRAME MEMBER
3	4	CORNER STEADY
4	1	7 PIN PLUG & WIRING HARNESS
5	1	SPARE WHEEL CARRIER
6	1	SPARE WHEEL
7	1	CHASSIS
8	1	OFF SIDE BODY PANEL
9	1	NEAR SIDE BODY PANEL
10	1	WATER INLET
11	1	ELECTRICAL INLET
12	26	COVER BUTTONS
13	4	SIDE PANEL REFLECTORS
14	2	FRONT PANEL REFLECTORS
15	4	GRAB HANDLE
16	1	NEAR SIDE REAR LIGHT
17	1	OFF SIDE REAR LIGHT
18	1	DOOR RETAINER
19	1	NO PLATE
20	2	REFLECTOR - TRIANGULAR
21	1	NEAR SIDE REAR BODY PANEL
22	1	OFF SIDE REAR BODY PANEL
23	1	REAR DOOR
24	2	WHEEL ARCH TRIM
25	2	NEAR SIDE BODY/BED HINGE PLATE

REF NO.	QTY	DESCRIPTION
26	2	OFF SIDE BODY/BED HINGE PLATE
27	2	NEAR SIDE BED HINGE
28	2	OFF SIDE BED HINGE
29	2	BED BOARD FRAME
30	2	BED BOARD
31	2	BED LIFTER POLE
32	4	BED LEG POLE
33	2	WHEEL BOX
34	1	BASE BOARD
35	1	GAS BOTTLE STORAGE BOX
36	1	TABLE
37	2	CORNER UNIT
38	2	SEAT BASE UNIT
39	1	TOP BOX BASE UNIT
40	1	KITCHEN TOP BOX
41	1	FIRE EXTINGUISHER
42	2	TOP BOX LID
43	2	SPLASH SIDES
44	3	COOKER KNOB
45	1	GRILL PAN & WIRE TRIVET
46	1	3-WAY FRIDGE
47	1	ELECTRIC WATER PUMP
48	2	12 VOLT SOCKET
49	2	240 VOLT SOCKET