

DANDY



Typical Interior

THE NAME IN
FOLDING CARAVANS
& TRAILER TENTS



Interior of Dandy Six



THE COMPLETE DANDY RANGE
EASY TO TOW — COMPACT FOR ALL ROUND VISIBILITY



Contact Dandy for further information and a more detailed brochure — Address overleaf

Four

The smallest in our range which can sleep four adults, but also ideal for the young family or the retired couple. The body size is 4' x 6'6" and only weighing 5 cwts can be towed by the smallest of cars. There are two large comfortable double beds, one of which is 76" x 46" with a 3/4" thick mattress covered in strong cotton material, the other is 76" x 44" upholstered in good quality moquette and converts to a comfortable high back settee, which creates additional day time storage behind it. The two bed frames are hinged directly to the chassis, they are made of special aluminium extrusions, which are very light and easy to handle.

Each bed frame is fitted with side pannelling using rich Cherry finished plywood. The bedding locker gives plenty of room for storage and due to its ideal situation is also used as a bench seat which is covered by a cushion upholstered in moquette. Situated under the opening safety glass window are the kitchen units comprising of a large sink and drainer, a two ringed cooker with grill, all incorporated in a useful range of cupboards which includes a drawer, all in the rich Cherry finished plywood.

The second safety glass window is in the door, both the windows are curtained as standard. The door is fitted with a locking handle complete with two keys. The front and rear sections are in 18mm birch plywood with special phenolic film facings making varnishing unnecessary and no maintenance required. The roof is a unique construction of two layers of polyester fabric of enormous strength impregnated with a polished white PVC which has foam insulation between, making an inner tent unnecessary. The chassis is a tubular steel space frame. The trailer sides are clad with aluminium sheets, this ensures they are maintenance free.

The trailer is fitted with a reinforced cover for protection when standing outdoors in all weathers. As in all our models we fit 7" automatic reverse brakes as standard (there is no need to get out of your car to cancel the brakes in order to reverse) coupled with hydraulically damped hitch for smooth operation. All roofs are in polished white to reflect the sunlight ensuring that the interior of the trailer is cool when the weather is hot and conserves the heat in colder weather.

This model now has two plastic windows fitted in the side of the trailer.

Note: The wheels can be recessed to special order as on the 5-berth at an extra cost to give a total width of 4'2".

The Dandy Range

Four/Five

Although the 4/5 has the main features of the Dandy 4 the trailer is 10" wider giving 8 cu.ft. of increased storage capacity.

This is our most popular model sleeping four adults and a child, but also to suit the couple who go to club meetings most weekends and find the extra space useful for entertaining as many as six friends for a drink and a chat.

The bedding locker is 19' wide giving extra storage capacity — also making a childs bed.

This model now has two plastic windows fitted in the side of the trailer.

Note: The wheels can be recessed to special order as on the 5-berth at an extra cost to give a total width of 5'1".

Five

This is for the family of five or if you have a boy and a girl they can have a bed each. Ideal for the small family who wish to bring their friends or relatives on holiday.

It has all the features of the Dandy 4 and a fifth bed made by removing the additional small cupboard which is at the end of the 24" wide bedding locker giving plenty of storage capacity and due to its ideal situation is also used as an additional settee which is upholstered in moquette.

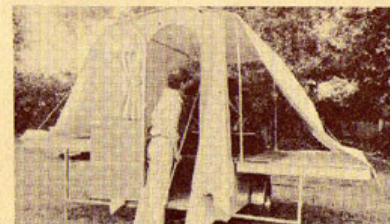
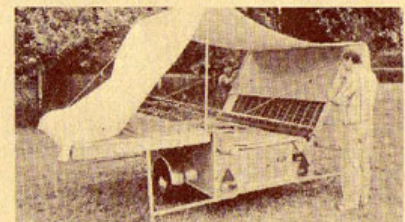
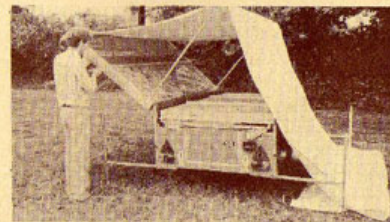
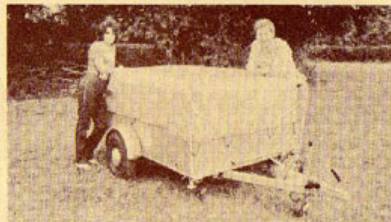
This model now has two plastic windows fitted in the sides of the trailer.

Six

The ultimate in camping luxury providing a spacious home on wheels giving you a kitchen, dining room, lounge and bedrooms making your holiday so much more comfortable and enjoyable. The folding caravan that can sleep six adults in comfort.

It has the features of the Dandy 4 plus a roomy dining area with a large table which has a single pedestal leg allowing seating on all four sides. The three large toughened glass opening windows are set in cavity walls clad in rich Cherry finished plywood on the inside and outside with polyester PVC and give an airy panoramic view of your surroundings (and are curtained as standard). There are three double beds which measure 73" x 48", two of the bed frames are made of aluminium extrusions for lightweight handling and hinged directly to the chassis, both of which are upholstered in good quality moquette and convert to comfortable high backed settees which create additional day time storage behind them. The third utilises the table and the two 4' settees. Privacy curtains are provided to divide off the three bedroom areas. When all the beds are made up you still have 30 sq.ft. of floor area available. A large wardrobe is fitted together with an additional cupboard above. The sink unit is fitted with an electric water pump and tap.

Look how easy it is!



DANDYS ARE OF UNIQUE CONSTRUCTION HONED AND REFINED OVER 20 YEARS OF CONTINUOUS PRODUCTION TO A VERY HIGH STANDARD

The Dandy folding Caravans or Trailer Tents for the 1980's are better value than ever before and are fully accepted by the Caravan Club as a folding Caravan and by the Camping Club as a Trailer Tent which is unique. The main features are:— No canvas, guy lines, tent pegs or inner tents used. Covered in polyester fabric impregnated with PVC which is rotproof, waterproof, untearable and will not sustain flame, it is also insect repellent. The nylon is antifungus treated so that when the trailer is folded wet, it can be left wet until the next time it is used without any deterioration of the material. Have you considered how you can dry out a canvas trailer at home? Have you the necessary space to put it all up and peg it out to stop the canvas shrinking? The polyester PVC fabric is washable with any normal cleaner, we have not found one that will affect it yet other than abrasives which will scratch the polished surface, you can even remove paint or tar with polystripper or petrol if necessary. It will last indefinitely, we haven't replaced any polyester PVC panels in the 16 years of manufacturing through normal wear and tear. No stretch or shrink problems. The roof is always made in polished white — two layers with $\frac{3}{8}$ " foam insulation, this keeps the inside of the trailer cool during hot weather and retains heat within the trailer in cold weather. These trailers have been successfully used in the Arctic and also in every desert in Africa and most other places in the world.

All models are fitted with lockable door and aluminium framed toughened glass windows. We fit 7" automatic reverse brakes as standard and for smooth braking a hydraulically damped hitch. We do not believe any trailers should be built without them for safety reasons, particularly if you have a small front wheel drive car. Have you thought of going down an Alpine pass for 10 miles or more with a mini weighing 12 cwts. or a Reliant three wheeler weighing 8 cwts. with over a quarter of a ton on the back pushing at you. We have had customers who have had accidents or near accidents towing unbraked trailers, who found out the hard way that brakes are essential. Don't get caught out, enquire about brakes and weight of trailer before you buy.

We use car wheels and tyres to give a more than adequate load and speed capacity. 95 m.p.h. on the 10" wheels and 113 m.p.h. on the 12". Inflation pressure is only 26lbs. giving a soft ride. Most Trailer tents are fitted with 8" tyres, and these are limited to 50 m.p.h. giving you no speed capacity to spare, the load capacity is usually between 1 and 2 cwts. Inflation pressure is usually about 60 lbs. and they must be checked weekly at these high

pressures. One could ask why do you see Trailer tents advertised for sale with two spare wheels? Could be the new Dandy customer who on his previous Trailer tent used 6 tyres to get to Sweden and back.

When you are erecting a Dandy, you turn the light weight aluminium framed beds over and the roof erects automatically. Putting the trailer up or down is done under cover and when folded up the roof is on the underside of the top bed and any water on the roof is kept away from the interior of the trailer. The vast majority of Trailer tents go up and down under cover and then drop all the wet canvas inside the trailer with your bedding and clothing and thoroughly soak them all while you are travelling.

The normal time taken from unhooking the trailer from the car to being fully ready for use is less than 5 mins. without rushing. (About 15 mins. quicker than trailers with an advertised 15 second erection time. The structure of the Caravan being all off the ground, you can set it level on a sloping or uneven site, and if you don't like the pitch you are on, you can lift the four corner legs and tow it fully erected anywhere else on the Camp/Caravan site.

Towing the Dandy 4 berth with a standard Hillman Imp saloon of 875 c.c. on the motorway and maintaining 50 m.p.h. we obtained the fuel consumption figure of 47.5 m.p.g. Tried for maximum speed the Imp could reach 74 m.p.h. with the Dandy on tow. Some figures obtained on a test done by 'Caravan' magazine. A Mazda 1300 c.c. and an Opel 1200 c.c., towing an 11 ft. caravan at a steady 50 m.p.h. gave only 18 m.p.g. Neither model could exceed 50 m.p.h.

The Dandy is now in its 20th year and has been an unqualified success with sales throughout the world, our very first model is still going strong with all the original materials, and when fitted with an annex 3 years ago the colour of the trailer still matched the new annex, and it looks good for another 15 years. Our local Trailer tent section of the Camping Club at the last count had 56 Trailer Tents and 32 of them were Dandy's, there are approximately 45 types available. **IF YOU ARE INTERESTED IN A FOLDING CARAVAN OR TRAILER TENT YOU CANNOT AFFORD TO IGNORE THE 'DANDY'. YOU CAN PAY MORE FOR OTHER MAKES AND NOT GET AS GOOD A SPECIFICATION.** We do very little advertising, as most of our sales come from recommendations by very satisfied customers. We have as many as six Dandy's in one road on a housing estate.

We fear no competition and are looking for sensible people who look at everything before making up their

minds when you do this the 'Dandy' must be at the top of your list. It is worth the journey to the works to see the 'Dandy' as it could save you a lot of money and possible disappointment by buying something else locally.

The Dandy is a very substantial go anywhere vehicle, just as suitable for an overland trip to Australia as a weekend by the seaside. It rides like a sports car.

The Dandy has all the comforts of a normal caravan but without the clumsiness of storing and towing without the penalty of high petrol consumption. It is approximately £1000 cheaper than the cheapest imported Folding Caravan and can easily be towed by the smallest of cars.

The Dandy has the lowest depreciation of any Folding Caravan/Trailer Tent and is built to give a lifetime of pleasure for less than a fortnights holiday for four in an hotel. A 10 year old Dandy is worth more than it cost new, compared with the average life of a normal caravan which is about 10 years.

EXTRACTS FROM A 'DANDY' TEST by Motor Caravan and Camping

The 'Dandy' towed level and firm as a rock, causing no loss of view in the rear mirror. The excellent towing characteristics are due in no small part to the sturdy axle with rod operated brakes and independent suspension.

We erected and dismantled the trailer several times during a holiday in Scotland. First time took 15 minutes each way, we got it down to a little more than five, and no doubt that could be improved upon with practice. We did like its suitability for camping ground which was rough or smooth level or sloping. The simple rugged corner jacks are first-class and give absolute rigid support to the hinged bunks.

The waterproof end pieces and the roof itself are all held tightly in position by elastic tensioners which clip over the hooks. Simple, but more effective than press studs and tension on the material is always correct. The reinforced plastic roof and the end pieces were absolutely waterproof.

We thought of the 'Dandy' at first as a tent trailer. Now we're inclined to agree with its designer that it is more like a folding caravan, with its opening window, lockable door, independence of the nature of the ground and, best of all, complete absence of pegs.

'Dandy' was certainly the quickest to erect and dismantle that we have tried so far. Construction of chassis, body and tenting is first class and the 'Dandy' is extremely good value for money and should last a lifetime.

COMPARE THE SPECIFICATION OF THE DANDYS

TRAILERS	4 BERTH	4/5 BERTH	5 BERTH	6 BERTH	TRAILERS	4 BERTH	4/5 BERTH	5 BERTH	6 BERTH
LENGTH	6' 6"	6' 6"	6' 6"	9'	S/S SINK UNIT	S	S	S	S
WIDTH	4'	4' 10"	5' 10"	6' 3"	S/S COOKER WITH 2 RINGS & GRILL	S	S	S	S
HEIGHT	3' 4"	3' 4"	3' 4"	3' 4"	3/4" MATTRESS	S	S	S	S
LENGTH INCLUDING DRAW BAR	9' 6"	9' 6"	9' 6"	11' 6"	CUSHIONS IN MOQUETTE	S	S	S	S
OVERALL WIDTH INCLUDING WHEELS	5' 1"	5' 11"	6'	6' 3"	FLOTEX CARPET	S	S	S	S
OPEN WIDTH	12'	13'	14'	6' 3"	GLASS WINDOWS OPENING	S	S	S	S
OPEN LENGTH	6' 6"	6' 6"	6' 6"	17'	GLASS WINDOW FIXED	S	S	S	S
UNLADEN WEIGHT (cwwts)	5	5 1/2	6	10	BEDROOM PRIVACY CURTAINS	O	O	O	S
LUGGAGE CAPACITY (cwwts)	5	4 1/2	4	5	WINDOW CURTAINS	S	S	S	S
NOSE WEIGHT — MINIMUM (lbs)	25	25	25	25	LOCKABLE DOOR	S	S	S	S
HEAD ROOM	6' 2"	6' 2"	6' 2"	6' 2"	TABLE	S	S	S	S
STORAGE CAPACITY OF CUPBOARDS (cub ft.)	15	18 1/2	22	24	LIGHT ALUMINIUM BED FRAMES	S	S	S	S
STORAGE CAPACITY INCLUDING FLOOR AREA WHEN CLOSED (cub ft.)	25	33	38	45	RECESSED WHEELS	O	O	S	S
TABLE SIZE	30" x 24"	30" x 24"	30" x 24"	48" x 26"	AUTO REVERSE BRAKES	S	S	S	S
BEDDING LOCKER	6' 6" x 13" x 12"	6' 6" x 18" x 12"	6' 6" x 24" x 12"	4' x 24" x 12" (2)	JOCKEY WHEEL	S	S	S	S
WHEEL SIZES	10"	10"	10"	12"	HAND BRAKE	S	S	S	S
TYRE SIZES	520/10	520/10	520/10	155 SR 12	DETACHABLE TOW BAR	O	O	O	O
TYRE PRESSURES (P.S.I.)	26	26	26	26	SAFETY CABLE ON TOW BAR	S	S	S	S
TOUGHENED GLASS FIXED WINDOW IN DOOR	18" x 24"	18" x 24"	18" x 24"	18" x 24"	HITCH LOCK	O	O	O	S
TOUGHENED GLASS OPENING WINDOW	30" x 24"	30" x 24"	30" x 24"	36" x 27" (3)	INTERIOR LIGHTING	O	O	O	O
HEIGHT OF BALL	13 1/2"	13 1/2"	13 1/2"	15 1/2"	MOSQUITO NETS	O	O	O	O
SIZE OF BALL TO BE FITTED TO TOW BAR (mm)	50	50	50	50	WARDROBE	O	O	O	S
BRAKES	7" DRUM AUTOMATIC REVERSE				SPARE WHEEL	O	O	O	O
SUSPENSION	INDISPENSION RUBBER TORSION				GAS CARRIER	O	O	O	O
HITCH	ALCO HYDRAULICALLY DAMPERED				NUMBER PLATE	O	O	O	O
PARKING BRAKE	ALCO HAND BRAKE				HUB CAPS	S	S	S	S
ANNEX					UNDER SEALING	S	S	S	S
LENGTH	8'	8'	8'	8'	TRAILER COVER	S	S	S	S
WIDTH	13'	13'	13'	14'	WATER TAP & PUMP	O	O	O	S
WINDOWS IN SIDE WALLS	66" x 43" (2)	66" x 43" (2)	66" x 43" (2)	66" x 43" (2)	HEATER	O	O	O	O
WINDOWS IN FRONT WALL	57" x 43"	57" x 43"	57" x 43"	57" x 43"	ANNEX	O	O	O	O

12' 3"

3.5

1.9

5.18

500kg

250kg

WE RESERVE THE RIGHT TO ALTER THE SPECIFICATION WITHOUT NOTICE

S - STANDARD

O - OPTIONAL

our spare is 14 SSR 10!

Max load 6925kg ≤ 62mp/h.
pressure cold should be 32

'DANDY' CARAVAN, CHURCH STREET, ORRELL, WIGAN, LANCS. WN5 8TG. TELEPHONE: UP HOLLAND (0695) 622759

HOW TO FIND US:-

If visiting the works we are in sight of the M6. Please turn off the M6 at junction 26 following the signs for Up Holland and Orrell. When you reach the main road 'T' junction traffic lights, turn left sign post Up Holland, then turn left at the next set of traffic lights and left again at the next traffic lights, this is Church Street, Orrell, and the works are on your left. Orrell lies between Wigan and Skelmersdale.